



STATISTICAL PROFILE OF BANGKOK METROPOLITAN ADMINISTRATION



Strategy and Evaluation Department Bangkok Metropolitan Administration

Printed by

Religious Affairs Printing Press Office of National Buddhism

314 -316 Soi Ban Baht Bamrung Muang Rd., Pom Prap Sattru Phai, Bangkok 10100

Tel. 0 2223 3351, 0 2223 5548 Fax. 0 2621 2910



STATISTICAL PROFILE
OF BANGKOK METROPOLITAN
ADMINISTRATION

2016



Strategy and Evaluation Department Bangkok Metropolitan Administration



General Responsibilities of the BMA

According to Article 89 of the Bangkok Metropolitan Administration Act 1985 as well as other related laws, the BMA has been authorized to perform the following principal functions within its jurisdictional area :

1. Maintain laws and orders as well as promote and support the safety and security of lives and properties.
2. Registration as mandated in the related laws.
3. Preventing and relieving public disaster.
4. Maintaining cleanliness and orderliness of the city.
5. City planning.
6. Provision and maintenance of roads, waterways and drainage system as well as construction and maintenance of roads, and drainage system connecting between local authorities.
8. Provision of transportation services and mass transportation systems.
9. Provision and control of markets, ferry - piers, and car parks.
10. Maintenance of public places.
11. Building control.
12. Improving slum areas and housing.
13. Provision and maintenance of public recreation areas.
14. Environmental development and conservation.

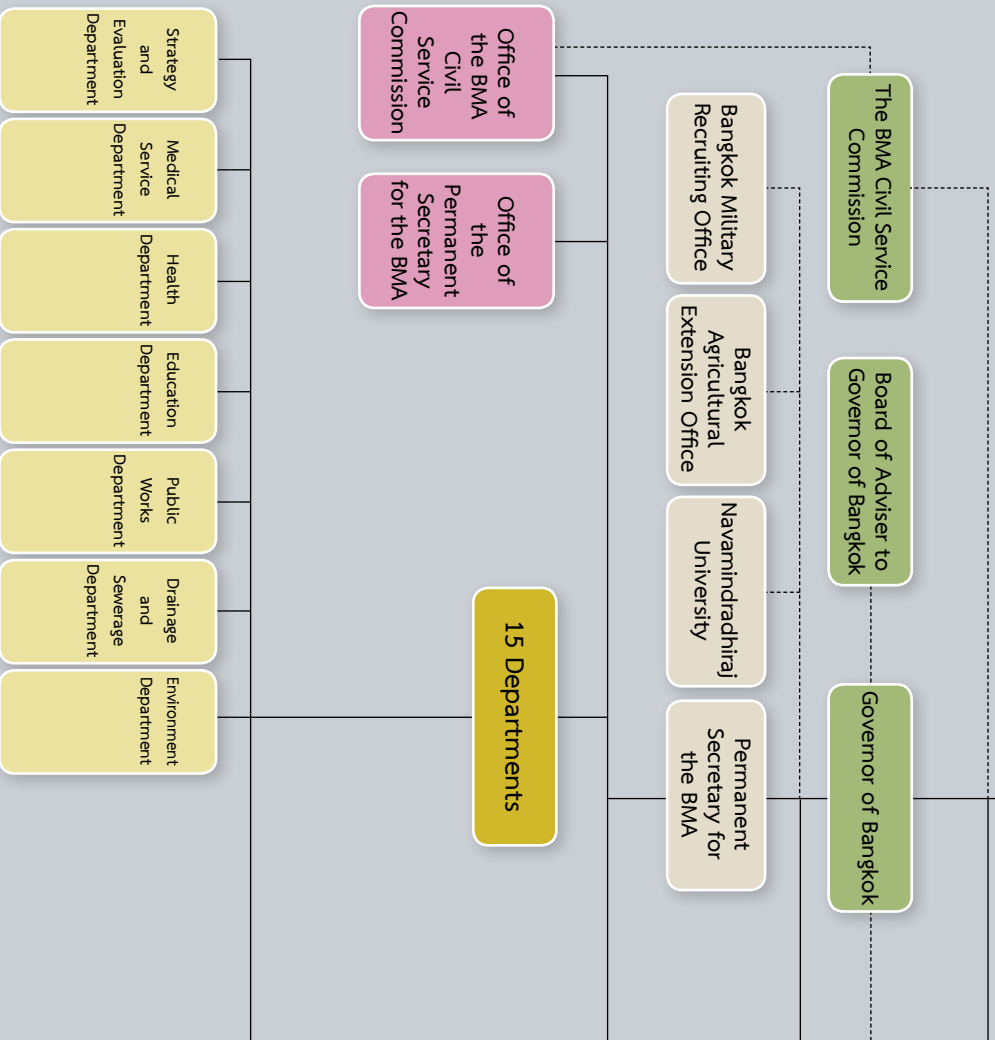
General Responsibilities of the BMA

15. Provision of utilities and facilities.
16. Provision of public health, family hygiene, and medical services.
17. Provision and control of cemeteries and crematoriums.
18. Animal husbandry control.
19. Provision of control of animal slaughtering.
20. Maintain and control of orderliness and hygiene in theatres and other public places.
21. Provision of education.
22. Provision of infrastructure.
23. Provision of social welfare and improvement of quality of life for youth, women, elderly and disadvantaged groups.
24. Promote sports as well as local cultural heritage.
25. Occupational training and employment promotion.
26. Managing the BMA's enterprises and promote investment activities, either in form of individual enterprise, partnerships, or cooperation.
27. Develop local development plans.
28. Tourism promotion.
29. Preservation and maintenance of art, tradition, local intelligence, and culture of the communities.

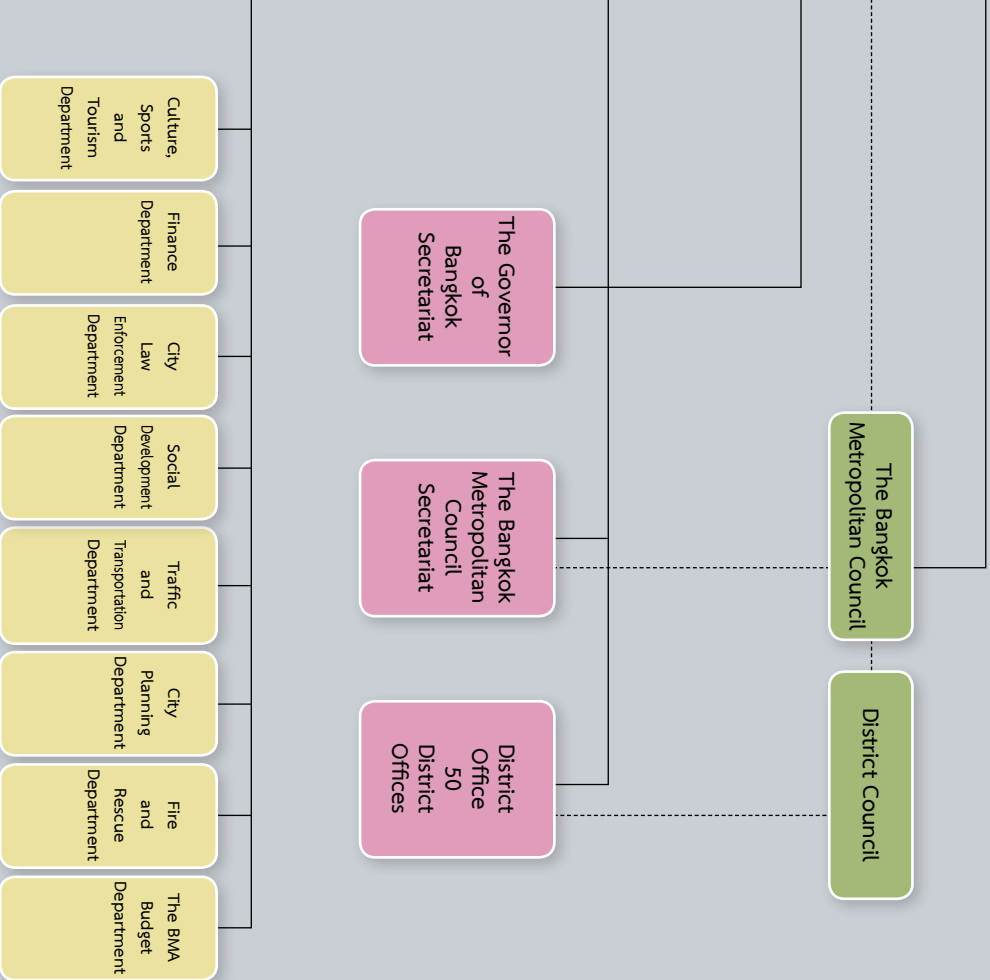
General Responsibilities of the BMA

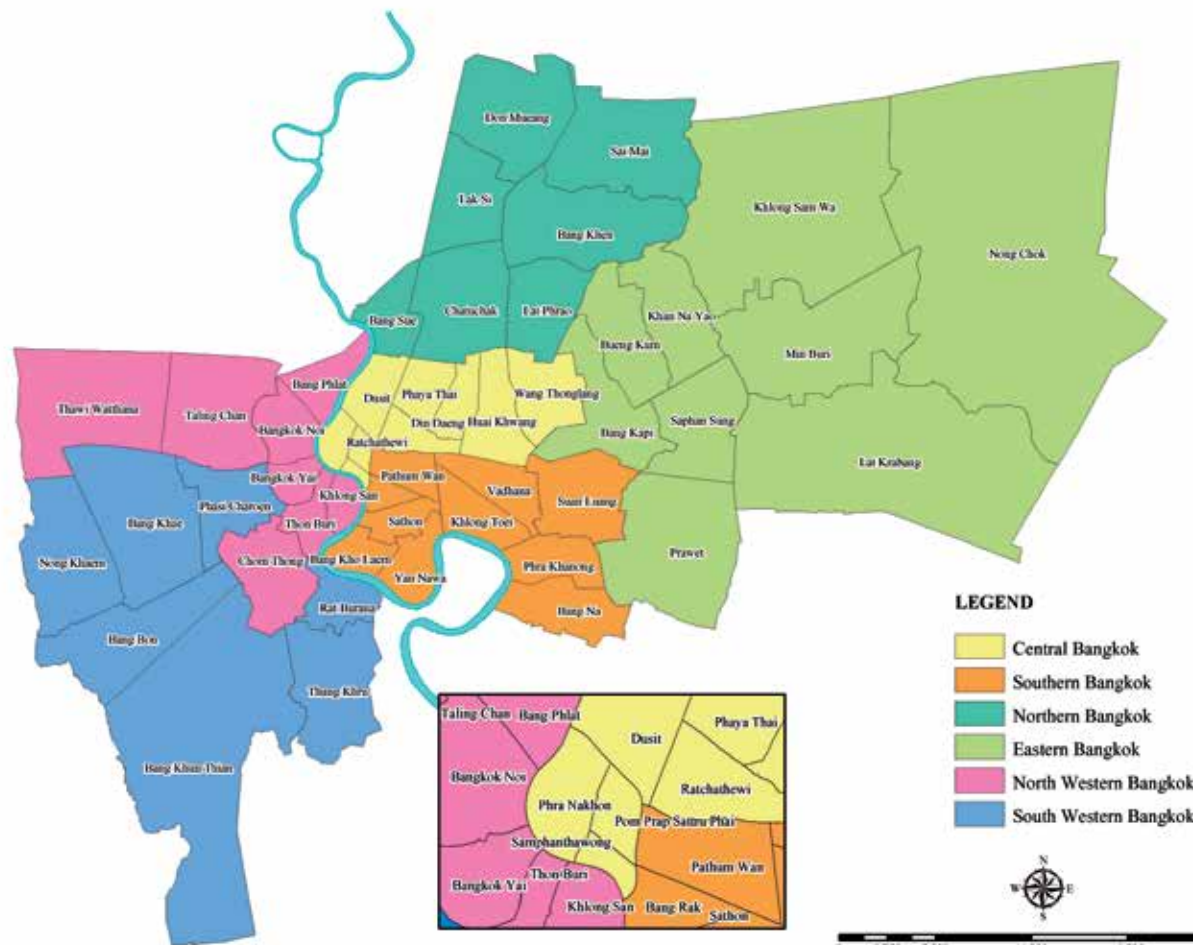
30. Promote democracy, equality, and individual freedom.
31. Promote public participation in local development.
32. Disposal of trash, nightsoil, and wastewater.
33. Managing usage of woodland, land natural resources, and environment.
34. Promote and support local governing authorities in local development.
35. Cooperate and coordinate work efforts with other local governing authorities.
36. Allocate fund in accordance to the specified laws to the local governing authorities.
37. Promote appropriate technology development.
38. Provision and maintenance of the wastewater treatment.
39. Environment and pollution management.
40. Provision and maintenance of the central market.
41. Provision of hospitals and health care, as well as control and prevent transmitted diseases.
42. Establish museums and public archives.
43. Any activities that will be beneficial to the public in the local communities as specified by the committees.
44. Any activities as specified by this legislation or other laws.

ORGANIZATION CHART OF THE BANGKOK



METROPOLITAN ADMINISTRATION





- LEGEND**
- Central Bangkok
 - Southern Bangkok
 - Northern Bangkok
 - Eastern Bangkok
 - North Western Bangkok
 - South Western Bangkok



Geographic Information Division, BMA.

LIST OF TABLES

TABLES	YEAR	PAGE
SOCIAL STATISTICS		
AREA, POPULATION, DENSITY AND HOUSES IN BANGKOK METROPOLIS BY DISTRICTS	2016	1
POPULATION IN BANGKOK BY DISTRICTS	2010 - 2016	4
POPULATION IN BANGKOK METROPOLIS, VICINITY AREA AND WHOLE KINGDOM	2010 - 2016	6
POPULATION IN BANGKOK METROPOLIS, VICINITY AREA AND WHOLE KINGDOM	2004 - 2016 AND FORECAST OF 2017 AND 2018	8
POPULATION IN VICINITY AREA	2004 - 2016 AND FORECAST OF 2017 AND 2018	10
BIRTH AND DEATH STATISTICS IN BANGKOK BY DISTRICTS	2012 - 2016	11
MOVE - IN AND MOVE - OUT STATISTICS IN BANGKOK BY DISTRICTS	2012 - 2016	14
COMMUNITY, POPULATION, FAMILY AND HOUSEHOLD IN BANGKOK BY DISTRICTS	2016	17

LIST OF TABLES (II)

TABLES	YEAR	PAGE
PERSONNEL OF BMA IN DEPARTMENTS AND DISTRICT OFFICES	2016	20
NUMBER OF STUDENTS, TEACHERS, CLASSES AND SCHOOLS IN BMA	ACADEMIC YEAR 2016	22
LOCATION OF HOSPITALS IN MEDICAL SERVICE DEPARTMENT	FISCAL YEAR 2016	25
NUMBER OF BEDS IN MEDICAL SERVICE DEPARTMENT	FISCAL YEAR 2016	26
NUMBER OF OUT - PATIENTS AND IN - PATIENTS OF HOSPITALS IN MEDICAL SERVICE DEPARTMENT	FISCAL YEAR 2014 - 2016	28
NUMBER OF ALL PATIENTS AND OUT - PATIENTS OF HOSPITALS IN MEDICAL SERVICE DEPARTMENT	FISCAL YEAR 2007 - 2016 AND FORECAST OF FISCAL YEAR 2017 AND 2018	30
STATISTICS OF SERVICES AT HEALTH CENTERS AND COMMUNITY HOSPITALS IN HEALTH DEPARTMENT	FISCAL YEAR 2016	31

LIST OF TABLES (III)

TABLES	YEAR	PAGE
ENERGY SALES WITHIN METROPOLITAN ELECTRICITY AUTHORITY AREA BY CATEGORIES	2016	36
NUMBER OF PERMITS OF INDUSTRIAL FACTORIES	2016	38
ECONOMIC STATISTICS		
COMPARISON OF BMA ACTUAL REVENUE AND ACTUAL EXPENDITURE	FISCAL YEAR 2004 - 2016	41
BMA ACTUAL REVENUE AND ACTUAL EXPENDITURE	FISCAL YEAR 2004 - 2016 AND FORECAST OF FISCAL YEAR 2017 AND 2018	43
COMPARISON OF BMA ESTIMATED REVENUE AND ACTUAL REVENUE APPROPRIATION BY TYPE OF REVENUE	FISCAL YEAR 2015 - 2017	45
BMA'S BUDGET EXPENDITURE APPROPRIATION BY BANGKOK DEVELOPMENT PLAN	FISCAL YEAR 2016 - 2017	47
BUDGET EXPENDITURE APPROPRIATION BY DEPARTMENTS	FISCAL YEAR 2011 - 2017	48

LIST OF TABLES (IV)

TABLES	YEAR	PAGE
BMA'S BUDGET EXPENDITURE APPROPRIATION BY DISTRICTS	FISCAL YEAR 2015 - 2017	50
TAXES COLLECTED BY BMA	FISCAL YEAR 2016	51
TAXES COLLECTED BY BMA	FISCAL YEAR 2004 - 2016 AND FORECAST OF FISCAL YEAR 2017 AND 2018	55
NUMBER OF LAND TRAFFIC ACCIDENTS IN BANGKOK METROPOLIS	1998 - 2016	56
NUMBER AND AREA OF PERMITTED BUILDING CONSTRUCTION BY TYPE AND DISTRICTS	2016	57
NATURAL RESOURCES AND ENVIRONMENT STATISTICS		
GARBAGE COLLECTION	2016	65

LIST OF FIGURES

FIGURES	YEAR	PAGE
SOCIAL STATISTICS		
POPULATION IN BANGKOK BY DISTRICTS	2016	3
POPULATION OF THAILAND AND BANGKOK METROPOLITAN	2000 - 2016	7
THE NUMBER OF POPULATION IN BANGKOK METROPOLIS, VICINITY AREA AND WHOLE KINGDOM	2004 - 2016 AND FORECAST OF 2017 AND 2018	9
BIRTH AND DEATH STATISTICS IN BANGKOK	2010 - 2016	13
MOVE - IN AND MOVE - OUT STATISTICS IN BANGKOK	2012 - 2016	16
NUMBER OF BEDS IN 8 HOSPITALS OF BMA	FISCAL YEAR 2016	27
NUMBER OF OUT - PATIENTS AND IN - PATIENTS OF HOSPITALS IN MEDICAL SERVICE DEPARTMENT	FISCAL YEAR 2012 - 2016	29
ENERGY SALES WITHIN METROPOLITAN ELECTRICITY AUTHORITY AREA BY CATEGORIES	2016	37

LIST OF FIGURES (II)

FIGURES	YEAR	PAGE
ECONOMIC STATISTICS		
COMPARISON OF BMA ACTUAL REVENUE AND ACTUAL EXPENDITURE	FISCAL YEAR 2004 - 2016	42
BMA ACTUAL REVENUE AND ACTUAL EXPENDITURE	FISCAL YEAR 2004 - 2016 AND FORECAST OF FISCAL YEAR 2017 AND 2018	44
COMPARISON OF BMA ESTIMATED REVENUE AND ACTUAL REVENUE APPROPRIATION BY TYPE OF REVENUE	FISCAL YEAR 2011 - 2017	46
TAXES COLLECTED BY BMA	FISCAL YEAR 2016	54
NATURAL RESOURCES AND ENVIRONMENT STATISTICS		
GARBAGE COLLECTION	2007 - 2016	66

AREA, POPULATION, DENSITY AND HOUSES IN BANGKOK METROPOLIS BY DISTRICTS : 2016

Sorted by total number of population in each district

Source : 1. Bureau of Registration Administration, Department of Provincial Administration, Ministry of Interior
2. Surveying and Mapping Division, City Planning Department

(PART 1/2)

DISTRICTS	POPULATION (Person)			AREA (km ²)	DENSITY POPULATION (Person/km ²)	NO. OF HOUSES (Houses)
	TOTAL	MALE	FEMALE			
Sai Mai	200,374	94,258	106,116	44.615	4,491	96,064
Bang Khae	192,413	89,796	102,617	44.456	4,328	85,875
Bang Khen	190,828	91,071	99,757	42.123	4,530	104,598
Khlong Sam Wa	189,507	89,787	99,720	110.686	1,712	78,343
Bang Khun Thian	179,768	85,107	94,661	120.687	1,490	84,599
Prawet	172,761	81,425	91,336	52.490	3,291	86,555
Lat Krabang	171,933	82,232	89,701	123.859	1,388	87,658
Don Mueang	168,896	84,191	84,705	36.803	4,589	72,609
Nong Chok	167,844	81,944	85,900	236.261	710	60,546
Chatuchak	158,130	73,962	84,168	32.908	4,805	107,192
Nong Khaem	155,229	72,638	82,591	35.825	4,333	58,908
Chom Thong	153,668	73,459	80,209	26.265	5,851	69,330
Bang Kapi	148,392	67,641	80,751	28.523	5,203	100,751
Bueng Kum	144,449	66,156	78,293	24.311	5,942	72,370
Min Buri	141,214	66,567	74,647	63.645	2,219	56,839
Phasi Charoen	127,582	59,927	67,655	87.674	7,154	53,577
Bang Sue	126,136	59,467	66,669	11.545	10,926	60,466
Din Daeng	123,966	57,524	66,442	8.354	14,839	58,107
Suan Luang	121,740	56,054	65,686	23.678	5,141	71,294
Lat Phrao	121,000	54,948	66,052	22.157	5,461	54,771
Thung Khru	120,976	56,941	64,035	30.741	3,935	50,284
Wang Thonglang	112,849	51,725	61,124	19.265	5,858	59,546
Bangkok Noi	112,581	53,382	59,199	11.944	9,426	48,709
Thon Buri	111,027	52,414	58,613	8.551	12,984	54,058
Bang Bon	107,136	51,240	55,896	34.745	3,083	49,489
Lak Si	105,588	50,230	55,358	22.841	4,623	51,229

AREA, POPULATION, DENSITY AND HOUSES IN BANGKOK METROPOLIS BY DISTRICTS : 2016

Sorted by total number of population in each district

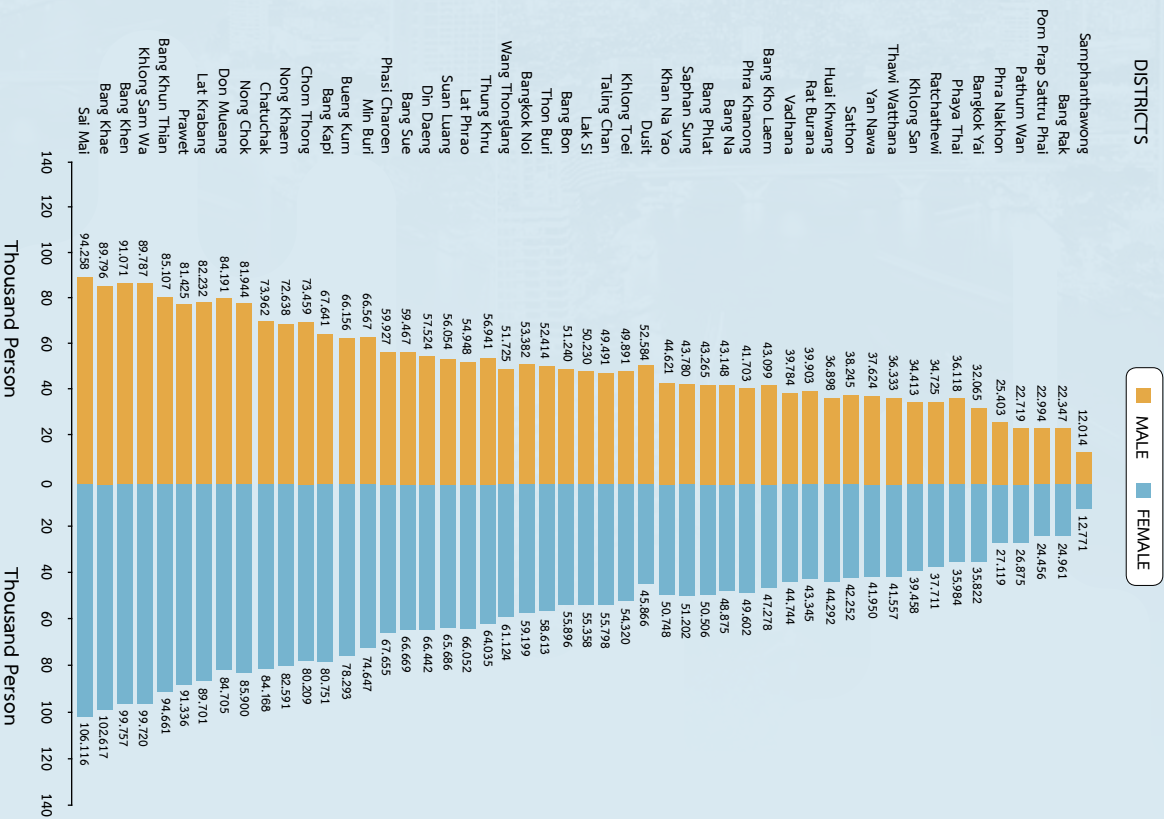
Source : 1. Bureau of Registration Administration, Department of Provincial Administration, Ministry of Interior
2. Surveying and Mapping Division, City Planning Department

(PART 2/2)

DISTRICTS	POPULATION (Person)			AREA (km ²)	DENSITY POPULATION (Person/km ²)	NO. OF HOUSES (Houses)
	TOTAL	MALE	FEMALE			
Taling Chan	105,289	49,491	55,798	29.479	3,572	41,345
Khlong Toei	104,211	49,891	54,320	12.994	8,020	66,481
Dusit	98,450	52,584	45,866	10.665	9,231	32,338
Khan Na Yao	95,369	44,621	50,748	25.980	3,671	41,518
Saphan Sung	94,982	43,780	51,202	28.124	3,377	36,401
Bang Phlat	93,771	43,265	50,506	11.360	8,254	47,479
Bang Na	92,023	43,148	48,875	18.789	4,898	62,042
Phra Khanong	91,305	41,703	49,602	13.986	6,528	50,662
Bang Kho Laem	90,377	43,099	47,278	10.921	8,276	39,129
Vadhana	84,528	39,784	44,744	12.565	6,727	68,081
Rat Burana	83,248	39,903	43,345	15.782	5,275	35,842
Huai Khwang	81,190	36,898	44,292	15.033	5,401	69,142
Sathon	80,497	38,245	42,252	9.326	8,631	41,304
Yan Nawa	79,574	37,624	41,950	16.662	4,776	50,803
Thawi Watthana	77,890	36,333	41,557	50.219	1,551	32,329
Khlong San	73,871	34,413	39,458	6.051	12,208	38,181
Ratchathewi	72,436	34,725	37,711	7.126	10,165	45,522
Phaya Thai	72,102	36,118	35,984	9.595	7,515	41,518
Bangkok Yai	67,887	32,065	35,822	6.180	10,985	29,861
Phra Nakhon	52,522	25,403	27,119	5.536	9,487	19,221
Pathum Wan	49,594	22,719	26,875	8.369	5,926	30,752
Pom Prap Sattru Phai	47,450	22,994	24,456	1.931	24,573	19,674
Bang Rak	47,308	22,347	24,961	5.536	8,546	30,081
Samphanthawong	24,785	12,014	12,771	1.416	17,504	13,238
TOTAL	5,686,646	2,687,253	2,999,393	1,568.737	3,625	2,816,711

POPULATION IN BANGKOK BY DISTRICTS : 2016

Sorted by total number of population in each district



Source : Bureau of Registration Administration, Department of Provincial Administration, Ministry of Interior

POPULATION IN BANGKOK BY DISTRICTS : 2010 - 2016

Sorted by population of 2016

(PART 1/2)
(Person)

Source : Bureau of Registration Administration, Department of Provincial Administration, Ministry of Interior

DISTRICTS	2010	2011	2012	2013	2014	2015	2016
Sai Mai	183,333	185,987	188,163	191,536	194,511	197,715	200,374
Bang Khae	193,190	192,276	191,781	192,119	191,966	192,281	192,413
Bang Khen	188,164	188,252	189,737	190,544	190,659	190,483	190,828
Khlong Sam Wa	160,480	165,352	169,729	174,197	178,958	184,306	189,507
Bang Khun Thian	155,821	161,642	165,693	169,614	173,144	176,724	179,768
Prawet	156,567	158,457	160,816	163,485	166,364	169,212	171,933
Lat Krabang	157,477	160,850	163,317	165,724	168,309	170,070	172,761
Don Mueang	166,354	166,210	166,635	167,827	168,197	168,278	168,896
Nong Chok	151,292	154,371	157,224	159,962	162,598	165,281	167,844
Chatuchak	162,838	161,409	160,853	160,948	160,366	159,514	158,130
Nong Khaem	145,361	148,298	150,285	151,877	153,175	154,389	153,668
Chom Thong	160,451	158,646	157,970	157,156	156,030	155,048	155,229
Bang Kapi	149,606	148,645	148,491	149,056	148,964	149,102	148,392
Bueng Kum	147,030	146,197	145,795	145,822	145,514	144,661	144,449
Min Buri	135,032	136,236	137,295	138,661	139,771	140,702	141,214
Phasi Charoen	131,363	130,493	129,800	129,559	129,238	128,461	127,582
Bang Sue	138,653	135,001	132,169	130,511	128,995	127,716	126,136
Din Daeng	134,480	131,847	130,202	128,838	127,260	125,964	123,966
Suan Luang	115,966	115,419	115,731	116,688	118,371	120,136	120,976
Lat Phrao	122,520	122,180	122,152	122,441	122,196	121,843	121,740
Thung Khru	115,131	115,823	116,523	117,662	119,349	120,613	121,000
Wang Thonglang	115,697	115,083	114,748	114,805	114,245	113,521	112,581
Bangkok Noi	124,352	120,032	117,950	117,503	116,653	115,202	112,849
Thon Buri	124,499	121,539	119,643	117,536	115,330	113,338	111,027
Bang Bon	104,535	104,768	105,161	106,085	107,140	107,397	107,136
Lak Si	112,908	111,120	109,858	109,049	107,797	106,657	105,588

POPULATION IN BANGKOK BY DISTRICTS : 2010 - 2016

Sorted by population of 2016

(PART 2/2)

(Person)

Source : Bureau of Registration Administration, Department of Provincial Administration, Ministry of Interior

DISTRICTS	2010	2011	2012	2013	2014	2015	2016
Taling Chan	106,753	106,786	106,532	106,192	105,857	105,613	104,211
Khlong Toei	112,906	110,481	109,001	108,066	107,221	106,233	105,289
Dusit	111,496	108,815	107,969	106,811	104,394	101,576	98,450
Khan Na Yao	86,340	87,169	88,471	90,437	92,094	94,242	94,982
Saphan Sung	88,578	88,918	89,895	91,358	92,735	93,854	93,771
Bang Phlat	101,276	100,319	99,153	98,113	96,787	95,478	95,369
Bang Na	98,869	97,039	95,855	95,204	94,315	93,297	92,023
Phra Khanong	95,661	94,482	93,461	92,774	92,448	92,197	91,305
Bang Kho Laem	98,870	96,422	94,877	93,508	92,273	91,405	90,377
Vadhana	80,929	80,847	81,755	82,637	83,520	84,214	84,528
Rat Burana	89,297	87,841	86,643	85,825	84,881	84,157	83,248
Huai Khwang	77,292	77,720	78,207	78,943	80,002	80,735	80,497
Sathon	88,179	86,214	85,048	83,898	82,432	81,745	81,190
Yan Nawa	84,286	82,481	81,529	81,162	80,843	80,211	79,574
Thawi Watthana	74,592	75,460	76,274	76,787	77,121	77,604	77,890
Khlong San	79,546	77,471	76,353	75,765	75,224	74,796	73,871
Ratchathewi	76,233	72,900	73,280	73,550	73,790	73,597	72,436
Phaya Thai	74,693	73,533	73,084	72,495	72,203	71,864	72,102
Bangkok Yai	75,621	73,864	72,241	71,087	70,003	69,349	67,887
Phra Nakhon	60,313	58,771	57,831	56,684	55,373	53,899	52,522
Pathum Wan	57,368	54,996	53,912	52,613	51,557	50,673	49,594
Pom Prap Sattru Phai	53,526	52,093	50,930	50,092	49,280	48,585	47,450
Bang Rak	47,053	46,087	46,112	46,114	46,472	46,777	47,308
Samphanthawong	28,617	28,001	27,426	26,932	26,359	25,694	24,785
TOTAL	5,701,394	5,674,843	5,673,560	5,686,252	5,692,284	5,696,409	5,686,646

POPULATION IN BANGKOK METROPOLIS, VICINITY AREA AND WHOLE KINGDOM : 2010 - 2016

Sorted by population of 2016

Source : Bureau of Registration Administration, Department of Provincial Administration, Ministry of Interior

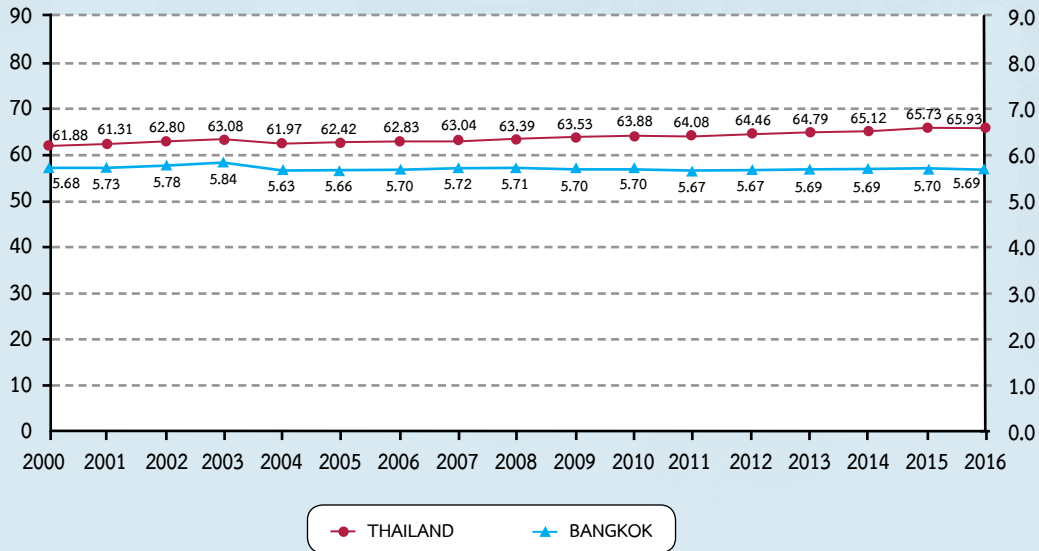
(Person)

	PROVINCE	2010	2011	2012	2013	2014	2015	2016
1.	Whole Kingdom	63,878,267	64,076,033	64,456,695	64,785,909	65,124,716	65,729,098	65,931,550
2.	Bangkok Metropolis	5,701,394	5,674,843	5,673,560	5,686,252	5,692,284	5,696,409	5,686,646
	Samut Prakan	1,185,180	1,203,223	1,223,302	1,241,610	1,261,530	1,279,310	1,293,553
	Nonthaburi	1,101,743	1,122,627	1,141,673	1,156,271	1,173,870	1,193,711	1,211,924
	Pathum Thani	985,643	1,010,898	1,033,837	1,053,158	1,074,058	1,094,249	1,111,376
	Nakhon Pathom	860,246	866,064	874,616	882,184	891,071	899,342	905,008
	Samut Sakorn	491,887	499,098	508,812	519,457	531,887	545,454	556,719
3.	Vicinity Area	4,624,699	4,701,910	4,782,240	4,852,680	4,932,416	5,012,066	5,078,580
	(= Samut Prakan + Nonthaburi + Pathum Thani + Nakhon Pathom + Samut Sakorn)							
4.	Bangkok Metropolitan Region (BMR)	10,326,093	10,376,753	10,455,800	10,538,932	10,624,700	10,708,475	10,765,226
	(= BMA + Vicinity Area)							

POPULATION OF THAILAND AND BANGKOK METROPOLITAN 2000 - 2016

THAILAND (Million Person)

BANGKOK (Million Person)



Source : Bureau of Registration Administration, Department of Provincial Administration, Ministry of Interior

POPULATION IN BANGKOK METROPOLIS, VICINITY AREA AND WHOLE KINGDOM : 2004 - 2016 AND FORECAST OF 2017 AND 2018

Source : 2004 - 2016 from Bureau of Registration Administration, Department of Provincial Administration, Ministry of Interior
Forecast of 2017 and 2018 by Administrative Strategy Division, Strategy and Evaluation Department

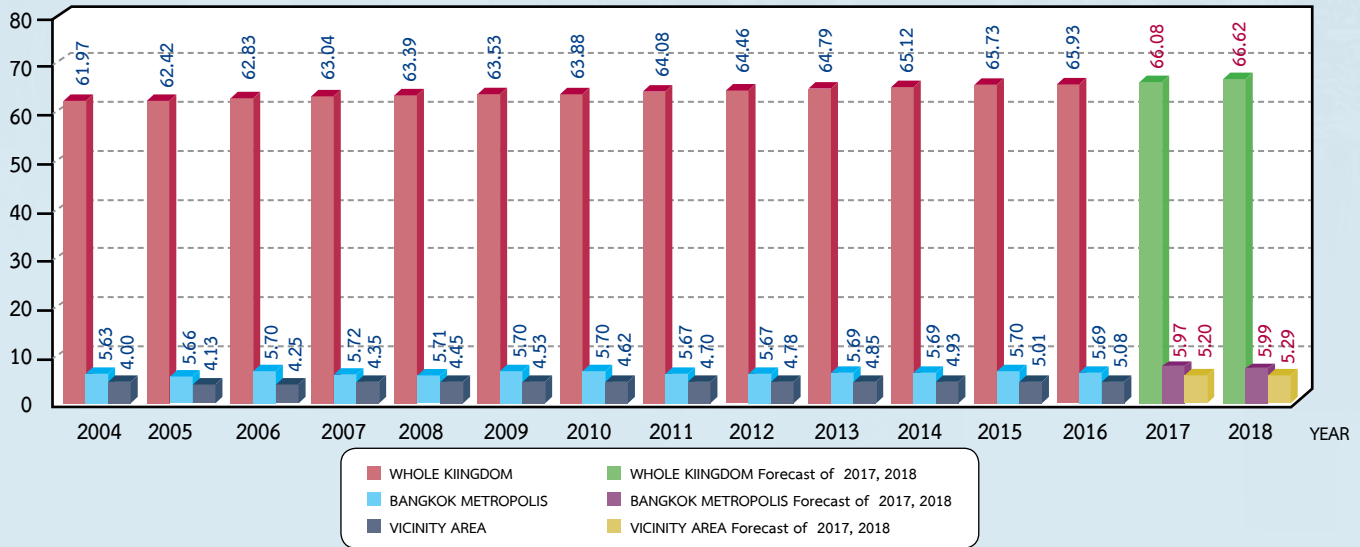
Note : Vicinity Area Consists of Samut Prakan Province, Nonthaburi Province, Pathum Thani Province, Nakhon Pathom Province and Samut Sakorn Province

(Person)

YEAR \ PROVINCE	WHOLE KINGDOM	BANGKOK METROPOLIS AND VICINITY AREA	BANGKOK METROPOLIS	VICINITY AREA
2004	61,973,621	9,636,541	5,634,132	4,002,409
2005	62,418,054	9,785,136	5,658,953	4,126,183
2006	62,828,706	9,948,392	5,695,956	4,252,436
2007	63,038,247	10,065,126	5,716,248	4,348,878
2008	63,389,730	10,161,694	5,710,883	4,450,811
2009	63,525,062	10,237,179	5,702,595	4,534,584
2010	63,878,267	10,326,093	5,701,394	4,624,699
2011	64,076,033	10,376,753	5,674,843	4,701,910
2012	64,456,695	10,455,800	5,673,560	4,782,240
2013	64,785,909	10,538,932	5,686,252	4,852,680
2014	65,124,716	10,624,700	5,692,284	4,932,416
2015	65,729,098	10,708,475	5,696,409	5,012,066
2016	65,931,550	10,765,226	5,686,646	5,078,580
Equation of Forecast	$y = 62,000,000 - 35,130x + 16,200.3x^2$	$y = 9,455,456 + 83,498.9x$	$y = 5,776,601 - 15,793x + 671.996x^2$	$y = 3,713,126 + 87,867.7x$
Forecast of 2017	66,084,677	10,874,937	5,970,135	5,206,876
Forecast of 2018	66,616,557	10,958,436	5,993,656	5,294,744

THE NUMBER OF POPULATION IN BANGKOK METROPOLIS, VICINITY AREA AND WHOLE KINGDOM : 2004 - 2016 AND FORECAST OF 2017 AND 2018

POPULATION (Million Person)



Source : 2004 - 2016 from Bureau of Registration Administration, Department of Provincial Administration, Ministry of Interior
Forecast of 2017 and 2018 by Administrative Strategy Division, Strategy and Evaluation Department

POPULATION IN VICINITY AREA : 2004 - 2016 AND FORECAST OF 2017 AND 2018

Source : 2004 - 2016 from Bureau of Registration Administration, Department of Provincial Administration, Ministry of Interior
Forecast of 2017 and 2018 by Administrative Strategy Division, Strategy and Evaluation Department

(Person)

PROVINCE YEAR	SAMUT PRAKAN	NONHABURI	PATHUM THANI	NAKHON PATHOM	SAMUT SAKORN
2004	1,049,416	942,292	769,998	798,016	442,687
2005	1,077,523	972,280	815,402	808,961	452,017
2006	1,107,626	999,057	861,338	821,905	462,510
2007	1,126,940	1,024,191	896,843	830,970	469,934
2008	1,147,224	1,052,592	929,250	843,599	478,146
2009	1,164,105	1,078,071	956,376	851,426	484,606
2010	1,185,180	1,101,743	985,643	860,246	491,887
2011	1,203,223	1,122,627	1,010,898	866,064	499,098
2012	1,223,302	1,141,673	1,033,837	874,616	508,812
2013	1,241,610	1,156,271	1,053,158	882,184	519,457
2014	1,261,530	1,173,870	1,074,058	891,071	531,887
2015	1,279,310	1,193,711	1,094,249	899,342	545,454
2016	1,293,553	1,211,924	1,111,376	905,008	556,719
Equation of Forecast	$y = 986,727 + 19,545.4x$	$y = 863,026 + 18,106.2x + 1,086.23x^2 - 54.681x^3$	$y = 621,310 + 44,866.2x - 884.10x^2$	$y = 784,305 + 6,187.12x + 99.8330x^2$	$y = 433,844 + 2,661.23x + 311.823x^2$
Forecast of 2017	1,318,998	1,216,104	1,128,530	918,337	569,201
Forecast of 2018	1,338,544	1,221,976	1,142,453	928,019	582,776

BIRTH AND DEATH STATISTICS IN BANGKOK BY DISTRICTS : 2012 - 2016

Sorted by birth statistics of 2016

(PART 1/2)

Source : Bureau of Registration Administration, Department of Provincial Administration, Ministry of Interior

(Person)

DISTRICTS	BIRTH STATISTICS					DEATH STATISTICS				
	2012	2013	2014	2015	2016	2012	2013	2014	2015	2016
Ratchathewi	13,037	12,029	11,408	11,255	11,482	404	3,005	4,781	4,731	4,853
Bangkok Noi	10,550	10,205	9,969	9,696	8,664	806	2,023	3,203	3,242	3,232
Pathum Wan	7,694	7,151	6,840	6,727	6,531	385	1,345	2,084	2,110	2,087
Khan Na Yao	7,039	6,776	7,120	6,735	6,372	470	1,102	1,589	1,531	1,644
Bang Rak	5,104	5,210	5,085	5,000	5,282	304	803	1,259	1,308	1,374
Min Buri	5,082	4,336	4,282	4,729	4,678	685	818	1,011	1,080	1,234
Sai Mai	5,014	4,899	4,823	4,752	4,666	883	1,463	2,019	2,067	2,130
Bang Kho Laem	4,712	4,332	4,317	4,038	3,575	655	823	989	1,053	999
Suan Luang	3,463	3,335	3,602	3,163	3,089	647	895	1,207	1,216	1,309
Vadhana	3,267	3,163	3,192	3,059	2,826	409	594	751	732	669
Prawet	3,277	3,281	2,922	2,712	2,590	858	945	1,077	1,084	1,109
Phasi Charoen	1,897	2,461	2,558	2,571	2,391	847	982	1,147	1,133	1,197
Bang Na	2,081	2,097	2,310	2,234	2,279	543	601	668	678	727
Khlong San	2,751	2,602	2,646	2,549	2,205	542	815	1,086	1,082	1,137
Thon Buri	2,325	2,113	1,986	2,090	2,162	941	1,020	1,117	1,085	1,232
Phaya Thai	2,026	2,021	2,358	2,216	2,153	420	617	783	803	810
Dusit	3,074	2,731	2,627	2,196	2,115	660	1,057	1,389	1,397	1,355
Huai Khwang	2,097	1,826	1,837	1,707	1,753	414	664	907	888	905
Pom Prap Sattru Phai	2,288	2,064	1,961	1,939	1,743	389	767	954	969	987
Chatuchak	1,355	1,493	1,761	1,666	1,578	834	746	753	675	720
Bang Khun Thian	1,683	1,523	1,469	1,420	1,499	753	740	819	846	853
Bang Khae	2,054	1,862	1,937	1,466	1,393	1,109	1,014	1,042	1,044	1,134
Rat Burana	1,459	1,420	1,323	1,335	1,297	549	749	877	896	966
Bang Phlat	1,072	1,044	1,118	1,107	1,134	707	571	491	477	504
Lak Si	1,097	1,247	1,165	1,157	1,092	621	745	838	909	950
Bang Kapi	1,124	1,012	1,076	1,040	957	752	646	650	589	639

BIRTH AND DEATH STATISTICS IN BANGKOK BY DISTRICTS : 2012 - 2016

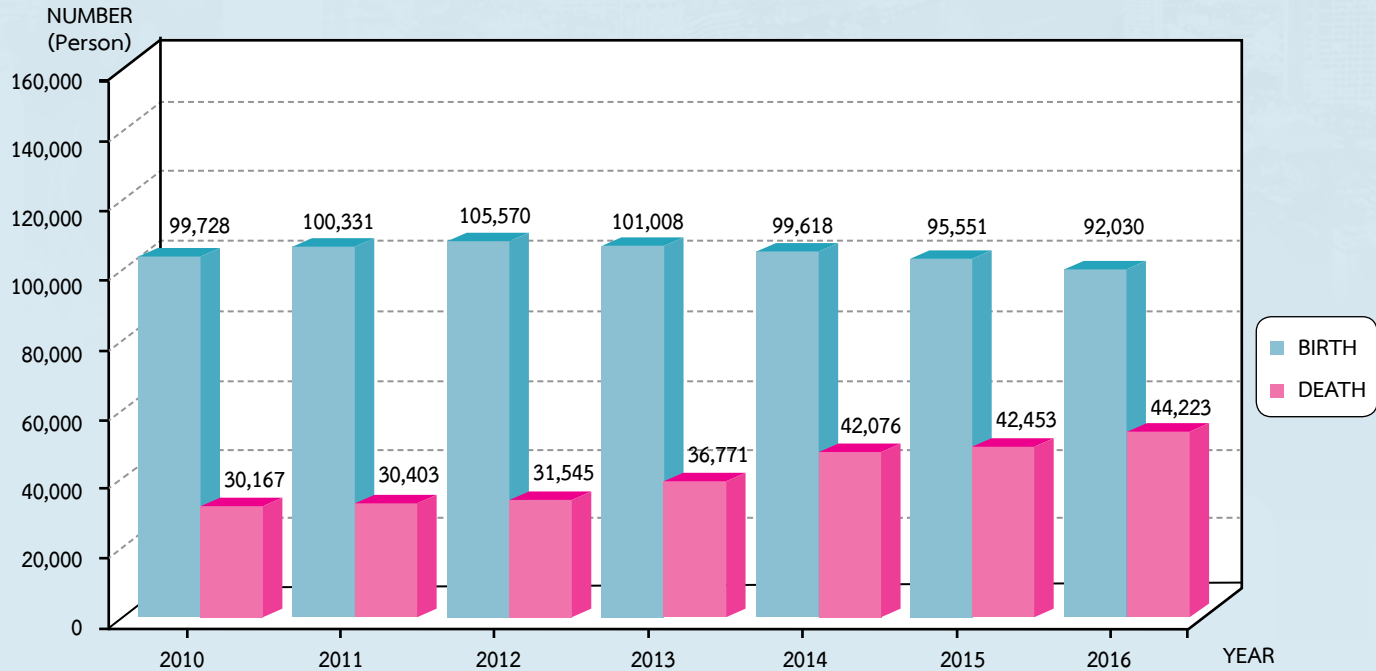
Sorted by birth statistics of 2016

(PART 2/2)
(Person)

Source : Bureau of Registration Administration, Department of Provincial Administration, Ministry of Interior

DISTRICTS	BIRTH STATISTICS					DEATH STATISTICS				
	2012	2013	2014	2015	2016	2012	2013	2014	2015	2016
Lat Phrao	608	629	771	853	830	594	465	413	407	431
Wang Thonglang	881	1,014	837	821	821	562	472	388	396	422
Chom Thong	2,011	1,316	659	757	653	933	893	821	779	865
Khlong Toei	854	775	814	632	647	709	758	754	827	831
Bang Khen	1,016	962	921	793	639	851	600	406	461	487
Nong Khaem	694	708	636	522	494	698	598	522	531	586
Bang Sue	662	602	504	378	432	857	699	566	563	558
Bueng Kum	430	533	529	397	425	644	457	339	363	344
Bang Bon	119	730	844	525	340	479	316	224	273	295
Sathon	416	371	383	378	316	532	476	372	356	399
Thawi Watthana	208	241	275	277	290	336	294	262	251	315
Nong Chok	403	327	318	293	288	771	687	593	612	757
Lat Krabang	444	409	254	195	182	779	679	581	578	590
Saphan Sung	166	143	160	149	142	436	288	246	259	294
Don Mueang	9	3	5	3	6	782	457	254	307	304
Yan Nawa	6	2	5	4	6	477	307	135	195	173
Thung Khru	5	4	4	4	4	617	400	256	243	250
Phra Khanong	4	2	1	3	4	601	337	199	208	215
Din Daeng	1	-	-	3	2	762	467	266	246	285
Khlong Sam Wa	2	2	5	-	1	709	508	338	328	422
Taling Chan	6	1	1	1	1	633	415	307	314	325
Samphanthawong	1	-	-	1	1	224	81	43	44	34
Phra Nakhon	1	1	-	-	-	419	249	128	112	116
Bangkok Yai	1	-	-	3	-	553	317	172	175	169
Other	-	-	-	-	-	-	1	-	-	-
TOTAL	105,570	101,008	99,618	95,551	92,030	31,545	36,771	42,076	42,453	44,223

BIRTH AND DEATH STATISTICS IN BANGKOK : 2010 - 2016



Source : Bureau of Registration Administration, Department of Provincial Administration, Ministry of Interior

MOVE - IN AND MOVE - OUT STATISTICS IN BANGKOK BY DISTRICTS : 2012 - 2016

Sorted by move - in of 2016

(PART 1/2)

(Person)

Source : Bureau of Registration Administration, Department of Provincial Administration, Ministry of Interior

DISTRICTS	MOVE - IN					MOVE - OUT				
	2012	2013	2014	2015	2016	2012	2013	2014	2015	2016
Khlong Sam Wa	15,446	14,986	15,400	4,893	15,742	10,309	9,770	9,888	9,921	9,732
Sai Mai	15,046	15,316	14,971	14,928	14,576	14,641	16,082	15,837	15,594	15,326
Don Mueang	14,912	14,027	13,582	13,317	14,484	13,503	12,119	12,548	12,382	12,982
Bang Khen	14,858	13,709	12,711	12,317	14,337	13,304	12,965	12,767	12,299	13,537
Prawet	11,911	11,844	11,953	11,576	12,813	10,520	11,698	11,222	10,721	10,949
Bang Khun Thian	13,912	13,611	13,274	12,968	12,693	10,680	10,530	10,476	10,046	10,256
Lat Krabang	12,587	12,377	12,478	11,494	11,843	9,835	9,526	9,398	9,167	9,343
Nong Chok	11,498	11,094	10,765	10,681	10,747	8,223	7,920	7,722	7,611	7,536
Bang Khae	12,532	10,631	10,613	10,064	10,285	13,649	11,020	11,661	10,185	10,126
Nong Khaem	11,300	10,798	10,729	9,852	9,588	9,322	9,157	9,296	8,407	8,410
Dusit	8,354	9,233	6,847	6,430	9,438	10,379	12,305	11,474	11,133	13,091
Bang Kapi	9,719	10,213	9,317	9,292	9,016	10,134	9,851	9,852	9,549	9,826
Chatuchak	10,470	9,911	9,367	8,783	8,817	11,446	10,450	11,026	10,564	10,502
Min Buri	9,588	9,840	9,419	8,969	8,763	10,266	12,090	11,916	12,268	12,231
Bueng Kum	9,354	9,382	8,863	8,844	8,579	9,524	9,120	8,985	9,379	8,462
Suan Luang	6,823	7,396	8,373	7,867	8,134	8,390	9,119	9,715	8,582	8,918
Chom Thong	7,685	7,643	7,783	7,552	7,238	9,750	9,046	8,600	8,362	7,891
Thung Khru	7,085	8,209	8,761	7,381	7,126	5,819	6,418	6,476	5,567	6,083
Phaya Thai	5,890	5,773	5,822	5,438	6,717	7,772	7,976	8,278	7,643	8,460
Lat Phrao	7,687	7,635	7,303	6,712	6,429	7,691	7,441	7,713	7,354	7,467
Wang Thonglang	6,911	6,862	6,571	6,284	6,355	7,512	7,294	7,472	7,306	7,174
Saphan Sung	6,197	6,602	6,475	6,161	6,237	4,946	4,852	4,829	4,798	4,783
Lak Si	6,865	6,243	5,729	5,894	6,211	8,331	7,775	7,585	7,524	7,611
Phasi Charoen	7,142	6,795	7,173	6,209	6,107	8,875	8,741	9,246	8,749	8,452
Huai Khwang	5,408	5,400	5,799	5,699	6,049	6,544	6,103	6,174	6,396	6,943
Bang Bon	7,220	6,840	6,857	6,022	5,615	6,492	6,655	6,886	6,188	5,789

MOVE - IN AND MOVE - OUT STATISTICS IN BANGKOK BY DISTRICTS : 2012 - 2016

Sorted by move - in of 2016

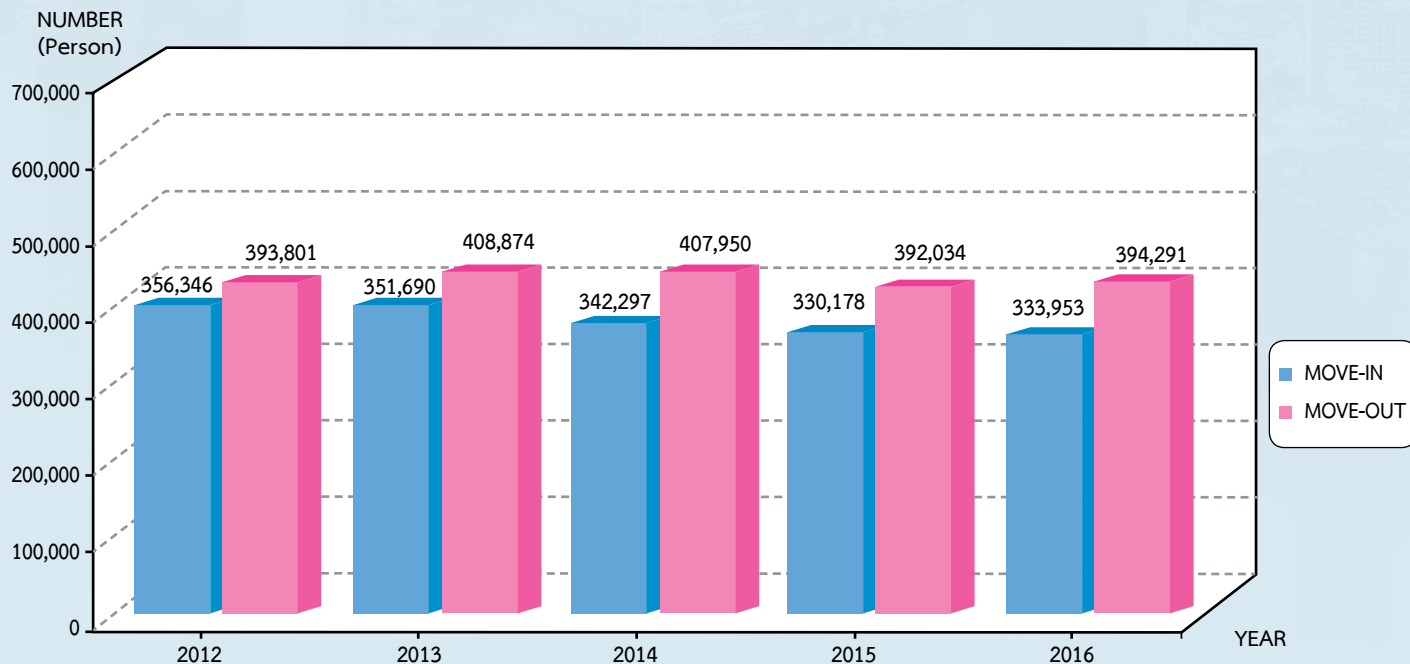
(PART 2/2)

(Person)

Source : Bureau of Registration Administration, Department of Provincial Administration, Ministry of Interior

DISTRICTS	MOVE - IN					MOVE - OUT				
	2012	2013	2014	2015	2016	2012	2013	2014	2015	2016
Phra Khanong	4,873	4,989	5,266	5,147	5,586	5,362	5,123	5,000	4,846	5,796
Bang Sue	5,932	5,764	5,893	5,686	5,510	8,562	7,148	7,000	6,502	6,296
Din Daeng	6,480	6,812	6,034	6,027	5,378	7,407	7,146	6,824	6,587	6,152
Khlong Toei	5,135	5,461	5,674	4,893	5,352	6,691	6,500	6,726	5,931	6,395
Bang Na	6,074	5,503	5,437	5,253	5,158	8,196	7,734	8,166	7,952	8,055
Khan Na Yao	6,182	5,964	5,634	5,142	4,973	8,565	10,418	10,862	10,178	9,836
Taling Chan	5,522	5,224	5,200	5,045	4,855	5,191	4,957	4,903	4,674	4,413
Thon Buri	5,180	4,896	4,685	4,348	4,521	8,071	8,105	8,140	7,642	7,901
Bangkok Noi	5,294	5,906	5,717	5,377	4,505	11,083	15,897	15,747	15,834	14,251
Yan Nawa	4,331	4,636	4,307	3,981	4,083	4,871	4,523	4,257	4,161	4,188
Rat Burana	4,228	4,253	4,345	4,077	4,031	6,310	5,908	6,043	5,601	5,561
Thawi Watthana	4,928	4,215	4,178	4,036	4,012	3,950	3,646	3,782	3,563	3,619
Ratchathewi	4,201	4,102	3,963	4,034	3,880	9,151	15,629	14,989	15,119	15,478
Bang Phlat	4,935	4,639	4,090	3,983	3,736	6,352	6,001	5,848	5,771	5,816
Vadhana	3,486	3,903	3,682	3,520	3,690	5,033	5,722	5,774	5,581	5,436
Bang Kho Laem	3,981	3,744	3,458	3,514	3,569	6,674	8,454	8,412	7,762	7,196
Sathon	3,330	3,551	2,976	3,471	3,370	4,446	4,484	4,335	4,178	4,270
Khlong San	3,562	3,540	3,410	15,956	2,959	5,865	6,202	6,134	5,508	5,304
Phra Nakhon	3,189	2,909	2,647	2,515	2,815	3,790	3,543	3,590	3,589	3,644
Bangkok Yai	3,141	2,974	2,956	2,994	2,486	4,242	3,583	3,514	3,212	3,366
Pathum Wan	2,170	2,490	2,173	2,183	2,016	5,393	10,630	9,875	9,502	8,863
Bang Rak	1,614	1,649	1,533	1,499	1,656	5,582	6,496	6,043	5,948	5,967
Pom Prap Sattru Phai	1,413	1,380	1,364	1,249	1,200	3,992	3,859	3,852	3,615	3,340
Samphanthawong	783	816	740	621	673	1,165	1,143	1,092	1,083	1,268
TOTAL	356,364	351,690	342,297	330,178	333,953	393,801	408,874	407,950	392,034	394,291

MOVE - IN AND MOVE - OUT STATISTICS IN BANGKOK : 2012 - 2016



Source : Bureau of Registration Administration, Department of Provincial Administration, Ministry of Interior

COMMUNITY, POPULATION, FAMILY AND HOUSEHOLD IN BANGKOK BY DISTRICTS : 2016

Sorted by number of community

Source : Community Development Division, Social Development Department

(PART 1/3)

DISTRICTS	NUMBER OF			
	COMMUNITY (Community)	POPULATION (Person)	FAMILY (Family)	HOUSEHOLD (Household)
Nong Chok	96	64,651	17,108	17,108
Don Mueang	95	99,775	25,779	25,979
Khlong Sam Wa	81	51,114	13,542	13,542
Lak Si	81	76,676	17,846	17,783
Sai Mai	79	96,969	23,507	23,553
Bang Khen	77	72,683	18,624	18,624
Nong Khaem	74	53,740	15,251	15,251
Lat Krabang	65	79,857	22,316	22,312
Min Buri	64	81,375	18,562	18,481
Phasi Charoen	53	44,294	9,477	9,477
Bang Khun Thian	52	58,113	13,342	13,243
Chom Thong	50	49,702	8,612	8,612
Bang Sue	50	38,358	7,723	7,723
Bang Khae	49	39,980	8,373	8,373
Dusit	48	43,465	9,298	9,298
Bang Phlat	48	49,905	10,107	10,107
Suan Luang	45	45,831	7,648	7,648

COMMUNITY, POPULATION, FAMILY AND HOUSEHOLD IN BANGKOK BY DISTRICTS : 2016

Sorted by number of community

Source : Community Development Division, Social Development Department

(PART 2/3)

DISTRICTS	NUMBER OF			
	COMMUNITY (Community)	POPULATION (Person)	FAMILY (Family)	HOUSEHOLD (Household)
Thon Buri	44	68,724	12,598	12,598
Taling Chan	43	28,595	7,259	7,259
Prawet	43	39,004	9,452	9,452
Phra Khanong	43	25,872	5,912	5,912
Khlong San	42	39,675	8,286	8,286
Chatuchak	42	38,892	9,918	9,902
Bangkok Noi	42	108,690	18,572	18,569
Khlong Toei	41	94,380	19,049	19,049
Khan Na Yao	41	33,542	8,447	8,447
Bueng Kum	38	35,346	10,222	10,204
Bang Na	37	36,525	8,012	8,012
Lat Phrao	36	41,664	12,049	12,013
Bangkok Yai	32	18,066	3,751	3,751
Thung Khru	29	25,434	6,015	6,015
Bang Kapi	29	29,146	7,563	7,563
Bang Kho Laem	29	49,068	7,219	7,219
Phaya Thai	29	25,922	6,787	6,787

COMMUNITY, POPULATION, FAMILY AND HOUSEHOLD IN BANGKOK BY DISTRICTS : 2016

Sorted by number of community

Source : Community Development Division, Social Development Department

(PART 3/3)

DISTRICTS	NUMBER OF			
	COMMUNITY (Community)	POPULATION (Person)	FAMILY (Family)	HOUSEHOLD (Household)
Saphan Sung	29	43,796	7,760	7,760
Rat Burana	28	20,935	3,714	3,714
Sathon	26	33,632	5,667	5,667
Ratchathewi	24	23,686	4,580	4,580
Huai Khwang	24	18,030	3,592	3,415
Din Daeng	23	22,862	6,413	6,413
Phra Nakhon	20	21,272	4,398	4,398
Wang Thonglang	19	20,551	4,372	4,372
Yan Nawa	18	14,154	3,069	3,069
Samphanthawong	18	8,053	1,996	1,996
Pathum Wan	17	28,866	4,888	4,888
Vadhana	17	17,022	3,548	3,548
Thawi Watthana	16	11,935	3,706	3,706
Bang Rak	15	14,752	3,615	3,615
Pom Prap Sattru Phai	14	9,905	2,086	2,086
Bang Bon	12	8,598	1,975	1,975
TOTAL	2,067	2,103,082	473,605	473,354

PERSONNEL OF BMA IN DEPARTMENTS AND DISTRICT OFFICES : 2016

Source : Personnel Classification Division, Office of the Bangkok Metropolitan Administration Civil Service Commission; as December 31, 2016
 Personnel Division, Office of the Permanent Secretary for the Bangkok Metropolitan Administration; as December 31, 2016
 Personnel Division, Education Department; as December 31, 2016

(PART 1/2)
 (Person)

DEPARTMENTS / DISTRICT OFFICES	NUMBER OF			
	OFFICERS	TEACHERS	PERMANENT EMPLOYEES	TEMPORARY EMPLOYEES
Permanent Secretary for the Bangkok Metropolitan Administration	1	-	-	-
Executive, Higher Level (Deputy Permanent Secretary for the Bangkok Metropolitan Administration)	6	-	-	-
Executive, Primary Level (Assistant Permanent Secretary for the Bangkok Metropolitan Administration)	6	-	-	-
Legal Officer (Expert) or Legal Officer (Advisory) (Legal Advisor for the Bangkok Metropolitan Administration)	1	-	-	-
Bangkok Metropolitan Administration Inspector	10	-	-	-
Inspector, Higher Level	14	-	-	-
The Bangkok Metropolitan Council Secretariat	77	-	46	16
The Governor of Bangkok Secretariat	62	-	17	6
Office of the Bangkok Metropolitan Administration Civil Service Commission	188	-	13	7
Office of the Permanent Secretary for the Bangkok Metropolitan Administration	661	-	348	237
Strategy and Evaluation Department	280	-	38	19
Medical Service Department	4,112	-	1,423	986
Health Department	2,578	-	1,111	561

PERSONNEL OF BMA IN DEPARTMENTS AND DISTRICT OFFICES : 2016

Source : Personnel Classification Division, Office of the Bangkok Metropolitan Administration Civil Service Commission; as December 31, 2016
 Personnel Division, Office of the Permanent Secretary for the Bangkok Metropolitan Administration; as December 31, 2016
 Personnel Division, Education Department; as December 31, 2016

(PART 2/2)
 (Person)

DEPARTMENTS / DISTRICT OFFICES	NUMBER OF			
	OFFICERS	TEACHERS	PERMANENT EMPLOYEES	TEMPORARY EMPLOYEES
Education Department	285	61	156	51
Public Works Department	935	-	1,426	306
Drainage and Sewerage Department	654	-	2,902	2,181
Environment Department	525	-	3,459	915
Culture, Sports and Tourism Department	621	-	317	164
Finance Department	543	-	877	183
City Law Enforcement Department	151	-	230	69
Social Development Department	194	135	156	126
Traffic and Transportation Department	194	-	83	58
City Planning Department	226	-	31	1
Fire and Rescue Department	2,081	-	94	78
The Bangkok Metropolitan Administration Budget Department	136	-	20	2
Faculty of Medicine Vajira Hospital	-	-	884	-
Kuakarun College of Nursing	-	-	93	-
437 Schools	502	15,891	2,080	2,173
50 District Offices	6,969	-	23,496	10,080
TOTAL	22,012	16,087	39,300	18,219

NUMBER OF STUDENTS, TEACHERS, CLASSES AND SCHOOLS IN BMA ACADEMIC YEAR : 2016

Sorted by number of students

Source : Educational Strategy Office, Education Department

(PART 1/3)

DISTRICTS	NUMBER OF			
	STUDENTS (Person)	TEACHERS (Person)	CLASSES (Classes)	SCHOOLS (Schools)
Nong Chok	16,153	814	528	37
Bang Khun Thian	16,131	805	476	16
Lat Krabang	16,065	776	495	20
Khlong Sam Wa	14,023	684	427	18
Sai Mai	13,150	612	369	9
Bang Kapi	11,620	549	355	11
Prawet	10,864	540	348	16
Bang Khae	10,049	486	320	12
Min Buri	9,557	472	310	13
Nong Khaem	8,959	428	253	6
Thung Khru	8,655	418	248	8
Don Mueang	8,474	397	247	6
Phasi Charoen	8,329	436	279	13
Bueng Kum	8,047	391	264	8
Chom Thong	7,945	414	275	11
Bang Bon	7,524	354	219	9
Chatuchak	7,220	369	215	7

NUMBER OF STUDENTS, TEACHERS, CLASSES AND SCHOOLS IN BMA ACADEMIC YEAR : 2016

Sorted by number of students

Source : Educational Strategy Office, Education Department

(PART 2/3)

DISTRICTS	NUMBER OF			
	STUDENTS (Person)	TEACHERS (Person)	CLASSES (Classes)	SCHOOLS (Schools)
Bang Na	6,671	317	196	7
Thawi Watthana	6,285	290	182	7
Bang Khen	6,274	284	195	5
Suan Luang	5,865	284	180	8
Lat Phrao	5,832	261	173	6
Din Daeng	5,821	271	171	3
Lak Si	4,939	262	164	6
Rat Burana	4,734	252	156	6
Taling Chan	4,649	290	190	16
Thon Buri	4,536	266	188	17
Vadhana	4,457	227	145	8
Khlong San	3,967	208	134	8
Saphan Sung	3,945	186	124	6
Samphanthawong	398	36	24	3
Dusit	3,845	200	133	9
Bangkok Noi	3,692	233	166	15
Bang Kho Laem	3,621	185	126	7

NUMBER OF STUDENTS, TEACHERS, CLASSES AND SCHOOLS IN BMA ACADEMIC YEAR : 2016

Sorted by number of students

Source : Educational Strategy Office, Education Department

(PART 3/3)

DISTRICTS	NUMBER OF			
	STUDENTS (Person)	TEACHERS (Person)	CLASSES (Classes)	SCHOOLS (Schools)
Huai Khwang	3,308	153	95	3
Bang Phlat	3,146	193	135	11
Bang Sue	3,123	171	113	7
Pathum Wan	2,989	153	115	7
Yan Nawa	2,960	151	96	6
Phra Khanong	2,233	125	73	4
Khan Na Yao	2,052	100	67	2
Phra Nakhon	1,995	145	105	11
Khlong Toei	1,985	105	65	4
Ratchathewi	1,972	95	69	4
Bangkok Yai	1,518	104	70	6
Wang Thonglang	1,270	68	46	3
Bang Rak	920	62	48	5
Phaya Thai	896	43	26	1
Sathon	854	48	38	2
Pom Prap Sattru Phai	749	51	37	4
TOTAL	294,266	14,764	9,473	437

LOCATION OF HOSPITALS IN MEDICAL SERVICE DEPARTMENT FISCAL YEAR : 2016

Sorted by total beds

Source : Planning Section, Technical Division, Medical Service Department

Note : *Bangkhunthian Geriatric Hospital , services out patients only

HOSPITALS	ADDRESS
Taksin	543 Somdet Chao Phraya Road, Klong San Sub - District, Klong San District Bangkok 10600
Bangkok Metropolitan Administration General	514 Luang Road, Pom Prap Sub - District, Pom Prap Sattru Phai District Bangkok 10100
Charoen Krung Pracharak	8 Charoen Krung Road, Bang Kho Laem Sub - District, Bang Kho Laem District Bangkok 10120
Sirindhorn	20 On Nut 90 Soi, Prawet Sub - District, Prawet District Bangkok 10250
Ratchaphiphat	18 Phutthamonthon sai 3 Road 10 Soi, Bang Phai Sub - District, Bang Khae District Bangkok 10160
Venerable Thawisak Jutindharo	6 Nong Khaem - Wat Srinual 1 Soi, Nong Khaem Sub - District, Nong Khaem District Bangkok 10160
Wetchakarunrat	48 Moo 2 Liap Wari Road, Krathum Rai Sub - District, Nong Chok District Bangkok 10530
Bangkok Metropolitan Administration Lat Krabang	2 Lat Krabang 15 Soi, On Nut - Lat Krabang Road, Lat Krabang District Bangkok 10520
Bangkhunthian Geriatric*	1075/1 Bang Khun Thian - Chai Talay Road, Tha Kham Sub - District, Bang Khun Thian District Bangkok 10150
TOTAL	

NUMBER OF BEDS IN MEDICAL SERVICE DEPARTMENT FISCAL YEAR : 2016

Source : Planning Section, Technical Division, Medical Service Department

Note : 1. *CHAROEN KRUNG PRACHARAK HOSPITAL Include Ophthalmology and Ear, Nose, Throat in General Surgery

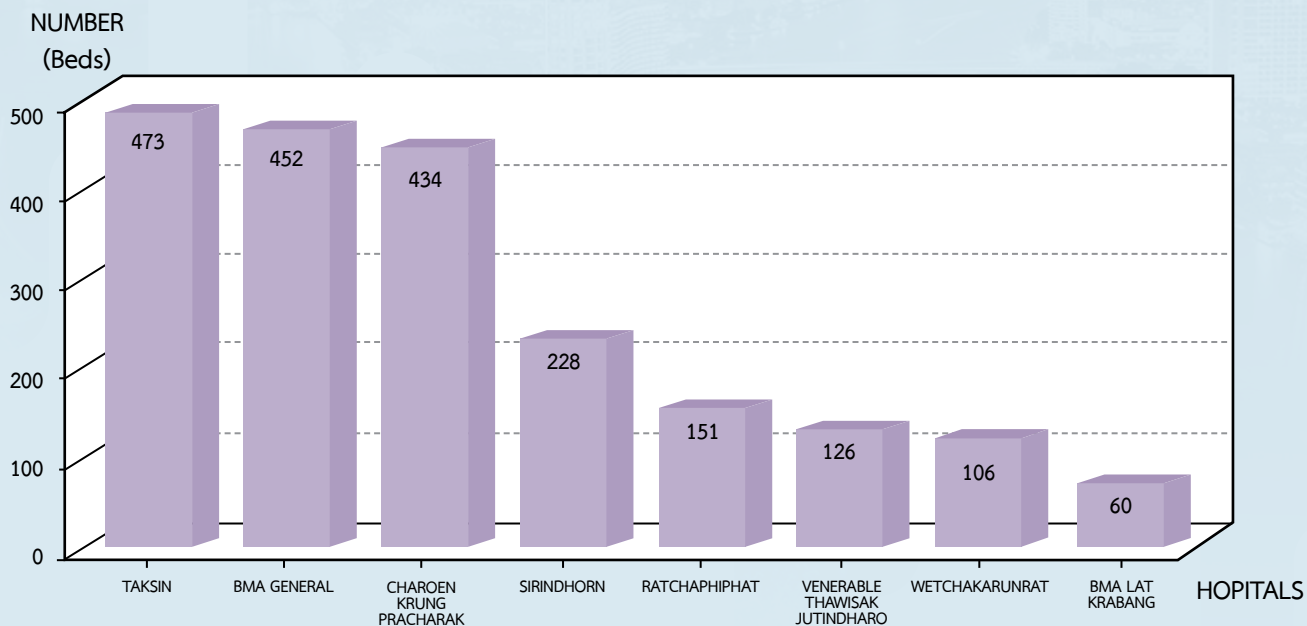
2. VENERABLE THAWISAK JUTINDHARO HOSPITAL, not classifying wards

3. RATCHAPHIPHAT HOSPITAL and SIRINDHORN HOSPITAL, not classifying special wards

(Beds)

WARDS	HOSPITALS IN MEDICAL SERVICE DEPARTMENT							
	BMA GENERAL	TAKSIN	CHAROEN KRUNG PRACHARAK	VENERABLE THAWISAK JUTINDHARO	WETCHA-KARUNRAT	BMA LAT KRABANG	RATCHAPHIPHAT	SIRINDHORN
Medical Ward	142	155	126	} 126	59	} 60	} 151	} 228
General Surgery	118	81	86		} 21			
Orthopedic	72	64	72					
Ophthalmology	} 12	} 27	*					
Ear, Nose, Throat			*					
Obstetrics and Gynaecology	71	79	72		12			
Pediatric Ward	37	67	78		14			
Intermediate ICU	-	-	-	-	-	-	-	
TOTAL	452	473	434	126	106	60	151	228

NUMBER OF BEDS IN 8 HOSPITALS OF BMA FISCAL YEAR : 2016



Source : Planning Section, Technical Division, Medical Service Department

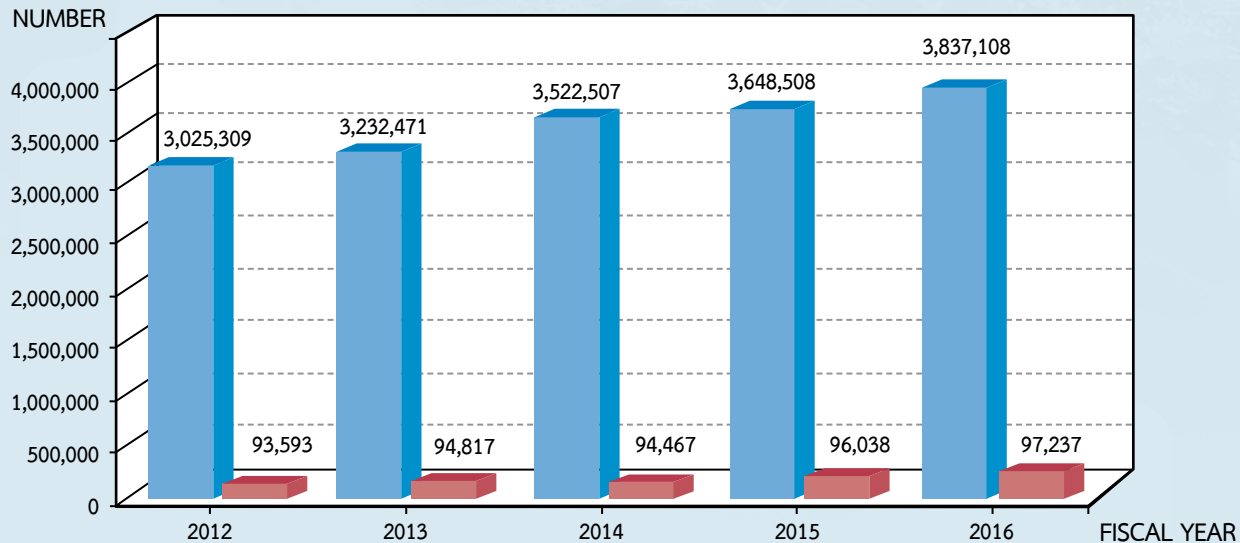
**NUMBER OF OUT - PATIENTS AND IN - PATIENTS OF HOSPITALS
IN MEDICAL SERVICE DEPARTMENT FISCAL YEAR : 2014 - 2016
Sorted by out - patients fiscal year 2016**

Source : Planning Section, Technical Division, Medical Service Department

Note : *Bangkhunthian Geriatric Hospital, services out patients only

HOSPITALS	2014		2015		2016	
	OUT - PATIENTS (Case)	IN - PATIENTS (Person)	OUT - PATIENTS (Case)	IN - PATIENTS (Person)	OUT - PATIENTS (Case)	IN - PATIENTS (Person)
BMA General	640,438	15,615	655,320	16,355	780,026	20,848
Taksin	707,005	19,492	713,909	19,811	755,730	20,147
Charoen Krung	720,888	20,221	768,409	21,132	654,305	16,082
BMA Lat Krabang	217,037	3,901	201,485	3,548	452,915	16,802
Sirindhorn	384,489	17,259	413,554	17,280	380,812	4,493
Wetchakarunrat	213,467	3,829	219,742	3,950	309,508	10,311
Thawisak Jutindharo	331,241	4,495	343,680	4,541	254,720	4,790
Ratchaphiphat	297,424	9,655	317,148	9,421	220,691	3,764
Bangkhunthian Geriatric*	10,518	-	15,261	-	28,401	-
TOTAL	3,522,507	94,467	3,648,508	96,038	3,837,108	97,237

NUMBER OF OUT - PATIENTS AND IN - PATIENTS OF HOSPITALS IN MEDICAL SERVICE DEPARTMENT FISCAL YEAR : 2012 - 2016



Source : Planning Section, Technical Division, Medical Service Department

NUMBER OF ALL PATIENTS AND OUT - PATIENTS OF HOSPITALS IN MEDICAL SERVICE DEPARTMENT FISCAL YEAR : 2007 - 2016 AND FORECAST OF FISCAL YEAR 2017 AND 2018

Source : Fiscal Year 2007 - 2016 from Planning Section, Technical Division, Medical Service Department

Forecast of Fiscal Year 2017 and 2018 by Administrative Strategy Division, Strategy and Evaluation Department

(Case)

FISCAL YEAR	PATIENTS OF HOSPITALS IN MEDICAL SERVICE DEPARTMENT	
	ALL PATIENTS	OUT - PATIENTS
2007	2,199,690	2,108,083
2008	2,438,576	2,350,091
2009	2,620,025	2,529,617
2010	2,853,444	2,755,020
2011	3,129,896	3,031,275
2012	3,118,902	3,025,309
2013	3,327,288	3,232,471
2014	3,616,974	3,522,507
2015	3,744,546	3,648,508
2016	3,934,345	3,837,108
Equation of Forecast	$y = 1,693,011 + 104,910x + 4,178.55x^2$	$y = 1,607,278 + 103,874x + 4,194.04x^2$
Forecast of Fiscal Year 2017	4,206,834	4,109,047
Forecast of Fiscal Year 2018	4,441,279	4,342,936

STATISTICS OF SERVICES AT HEALTH CENTERS AND COMMUNITY HOSPITALS IN HEALTH DEPARTMENT OF FISCAL YEAR : 2016

Source : Public Health System Development Division, Health Department

(PART 1/5)

PUBLIC HEALTH CENTERS	LOCATION	NUMBER		
		PATIENT TREATMENT (Times)	NEW PATIENT (Person)	OLD PATIENT (Person)
Health Center 1 Saphan Morn	Phra Nakhon	9,212	2,714	4,257
Health Center 2 Rajchaprarop	Ratchathewi	14,126	3,272	5,738
Health Center 3 Bang Sue	Bang Sue	45,947	9,468	14,514
Health Center 4 Din Daeng	Din Daeng	80,083	7,565	17,823
Health Center 5 Chulalongkorn	Pathum Wan	12,295	3,742	6,650
Health Center 6 Samosornwattanatamyong	Dusit	15,754	4,309	7,212
Health Center 7 Boonme Pururacharangsarn	Yan Nawa	42,413	8,339	12,306
Health Center 8 Boonrod Rungruang	Bang Na	41,106	9,906	17,523
Health Center 9 Prachathipratai	Phra Nakhon	29,319	4,737	9,106
Health Center 10 Sukhumvit	Khlong Toei	8,736	3,295	3,487
Health Center 11 Pradipat	Phaya Thai	15,891	4,383	6,784
Health Center 12 Chanthaing Netwisat	Bang Kho Laem	13,045	2,917	4,963
Health Center 13 Maitree Vanich	Samphanthawong	13,570	2,715	5,066
Health Center 14 Kaew Sriboonruang	Bang Kho Laem	14,356	3,231	5,663

STATISTICS OF SERVICES AT HEALTH CENTERS AND COMMUNITY HOSPITALS IN HEALTH DEPARTMENT OF FISCAL YEAR : 2016

Source : Public Health System Development Division, Health Department

(PART 2/5)

PUBLIC HEALTH CENTERS			LOCATION	NUMBER		
				PATIENT TREATMENT (Times)	NEW PATIENT (Person)	OLD PATIENT (Person)
Health Center	15	Lat Phrao	Huai Khwang	36,122	8,088	14,310
Health Center	16	Lumpini	Pathum Wan	25,153	4,165	8,836
Health Center	17	Prachaniwet	Chatuchak	19,774	5,165	6,242
Health Center	18	Mongkol Warnwangtan	Bang Kho Laem	18,055	3,635	6,582
Health Center	19	Wong Sawang	Bang Sue	29,455	5,709	8,466
Health Center	20	Siam City Bank Public Company Limited	Pom Prap Sattru Phai	4,898	1,622	2,409
Health Center	21	Wat Thatthong	Vadhana	63,281	10,163	21,686
Health Center	22	Wat Pakbo	Suan Luang	32,389	5,311	10,341
Health Center	23	Si Phraya	Bang Rak	28,027	4,562	8,070
Health Center	24	Bang Khen	Chatuchak	26,392	8,462	10,136
Health Center	25	Huai Khwang	Huai Khwang	14,426	9,936	6,796
Health Center	26	Chao Khun Pra Prayoonwong	Thon Buri	12,651	2,588	6,681
Health Center	27	Chan Chimpaiboon	Thon Buri	37,412	6,113	14,808
Health Center	28	Krung Thonburi	Khlong San	11,001	4,602	4,698

STATISTICS OF SERVICES AT HEALTH CENTERS AND COMMUNITY HOSPITALS IN HEALTH DEPARTMENT OF FISCAL YEAR : 2016

Source : Public Health System Development Division, Health Department

(PART 3/5)

PUBLIC HEALTH CENTERS			LOCATION	NUMBER		
				PATIENT TREATMENT (Times)	NEW PATIENT (Person)	OLD PATIENT (Person)
Health Center	29	Chuang Nutch Janet	Chom Thong	60,841	8,414	23,034
Health Center	30	Wat Chao Am	Bangkok Noi	21,151	5,900	6,587
Health Center	31	Erb - Jid Tungsubut	Bang Phlat	32,211	5,204	10,050
Health Center	32	Maris Tintamusik	Phra Khanong	11,715	3,200	4,638
Health Center	33	Wat Hong Rattanaram	Bangkok Yai	24,509	5,251	11,326
Health Center	34	Phosi	Phra Khanong	14,950	3,120	5,736
Health Center	35	Hua Mark	Bang Kapi	24,968	5,447	6,693
Health Center	36	Bukhalo	Thon Buri	15,741	2,116	8,653
Health Center	37	Prasong - Sudsakorn Tuchinda	Suan Luang	13,736	3,903	7,154
Health Center	38	Jeed - Thongkam Bampen	Dusit	6,930	3,239	2,056
Health Center	39	Rat Burana	Rat Burana	24,888	4,950	9,198
Health Center	40	Bang Khae	Bang Khae	51,639	10,870	17,351
Health Center	41	Khlong Toei	Khlong Toei	38,910	5,203	13,937
Health Center	42	Thanom Thongsima	Bang Khun Thian	44,592	11,588	14,106

STATISTICS OF SERVICES AT HEALTH CENTERS AND COMMUNITY HOSPITALS IN HEALTH DEPARTMENT OF FISCAL YEAR : 2016

Source : Public Health System Development Division, Health Department

(PART 4/5)

PUBLIC HEALTH CENTERS	LOCATION	NUMBER		
		PATIENT TREATMENT (Times)	NEW PATIENT (Person)	OLD PATIENT (Person)
Health Center 43 Min Buri	Min Buri	43,610	10,634	15,456
Health Center 44 Lam Phak Chi Nong Chok	Nong Chok	21,107	5,675	8,613
Health Center 45 Rom Klao Lat Krabang	Lat Krabang	27,912	6,693	13,552
Health Center 46 Kantaratutid	Lat Krabang	13,957	3,357	7,724
Health Center 47 Khlong Khwang	Phasi Charoen	20,508	6,077	8,377
Health Center 48 Nakwatcharautid	Nong Khaem	40,335	8,329	17,184
Health Center 49 Wat Chaiya Phruet Mala	Taling Chan	21,790	4,016	8,261
Health Center 50 Bueng Kum	Bueng Kum	33,715	6,951	14,597
Health Center 51 Wat Phai Ton	Phaya Thai	11,366	3,637	5,136
Health Center 52 Sam Sen Nok	Din Daeng	20,844	4,423	7,303
Health Center 53 Thung Song Hong	Lak Si	33,808	11,620	7,099
Health Center 54 That lam	Thung Khru	26,261	7,563	12,466
Health Center 55 Techasampan	Yan Nawa	8,873	2,887	4,127
Health Center 56 Tabcharoen	Bueng Kum	45,790	8,131	18,063

STATISTICS OF SERVICES AT HEALTH CENTERS AND COMMUNITY HOSPITALS IN HEALTH DEPARTMENT OF FISCAL YEAR : 2016

Source : Public Health System Development Division, Health Department

(PART 5/5)

PUBLIC HEALTH CENTERS			LOCATION	NUMBER		
				PATIENT TREATMENT (Times)	NEW PATIENT (Person)	OLD PATIENT (Person)
Health Center	57	Boonruang Lumlerd	Prawet	25,196	4,311	9,830
Health Center	58	Lom - Pimsean Fugudom	Rat Burana	20,287	5,055	6,061
Health Center	59	Thung Khru	Thung Khru	25,266	6,304	6,617
Health Center	60	Rossukon Manochayakorn	Don Mueang	21,002	7,582	8,447
Health Center	61	Sangwan Thasanarom	Sai Mai	34,545	7,156	10,749
Health Center	62	Tuangrat Sasanawin Pakdee Tharnpanya	Phasi Charoen	20,249	3,761	6,637
Health Center	63	Chinese Tae Chew Association Branch	Sathon	20,072	3,890	6,264
Health Center	64	Khlong Sam Wa	Khlong Sam Wa	28,708	5,169	13,057
Health Center	65	Raksasuk Bang Bon	Bang Bon	28,875	7,366	10,750
Health Center	66	Shrine of Guanyim	Lat Phrao	18,660	4,824	8,061
Health Center	67	Thawi Watthana	Thawi Watthana	22,984	5,288	11,411
Health Center	68	Saphan Sung	Saphan Sung	22,839	4,935	8,970
TOTAL				1,760,229	384,753	646,484

ENERGY SALES WITHIN METROPOLITAN ELECTRICITY AUTHORITY AREA BY CATEGORIES : 2016

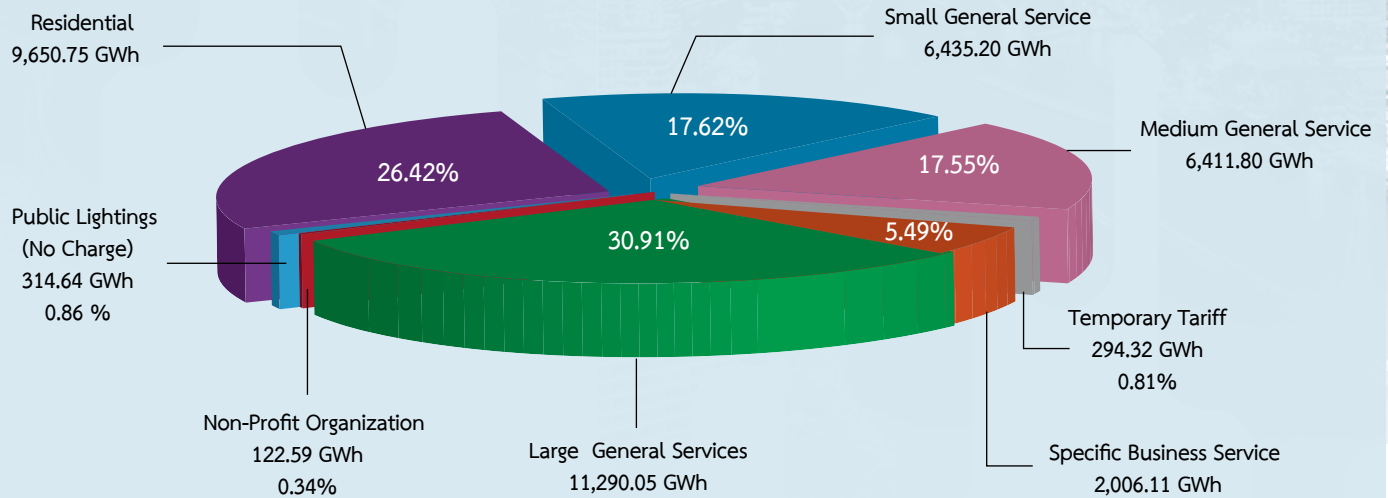
Sorted by number of customer

Source : The Metropolitan Electricity Authority

Note : Number of electricity users mean the users with the installation of ampere meters and electric usage (excluding breaker meters). Due to no collection for payment from users on public electricity; therefore, the Metropolitan Electricity Authority has issued a policy to reduce recording expenses on public electric units by using the size of public light bulbs for the record instead of the ampere meters as the following calculation : size of public light bulb x number of light bulb x period of turning on and off. All ampere meters that have been used will be removed, and this will result in no longer information of the number of users on public electricity. Temporary Electricity mean temporary electric usage for construction purposes, special events organized temporarily or temporary other purposes

ARIFFS GROUP	NUMBER OF CUSTOMER (Case)	ELECTRICITY ENERGY SALES (GWh)
Residential	2,148,446	9,650.75
Small General Service	395,699	6,435.20
Temporary Tariff	16,422	294.32
Medium General Service	15,397	6,411.80
Large General Service	2,752	11,290.05
Specific Business Service	2,540	2,006.11
Non-Profit Organizations	301	122.59
Public Lightings (No Charge)	-	314.64
TOTAL	2,581,557	36,210.82

ENERGY SALES WITHIN METROPOLITAN ELECTRICITY AUTHORITY AREA BY CATEGORIES : 2016



Source : The Metropolitan Electricity Authority

NUMBER OF PERMITS OF INDUSTRIAL FACTORIES : 2016

Sorted by number of factories

Source : Department of Industrial Works, Ministry of Industry

(PART 1/3)

DISTRICTS	FACTORIES (Factories)	CAPITAL (Baht)	LABORS (Person)	
			MALE	FEMALE
Bang Khun Thian	53	1,328.62	1,154	1,189
Chom Thong	17	353.98	167	280
Lat Krabang	16	139.52	231	115
Bang Bon	9	82.70	91	76
Bueng Kum	7	1,803.90	116	30
Rat Burana	7	52.06	63	48
Yan Nawa	5	63.75	67	10
Phasi Charoen	5	30.62	55	58
Nong Khaem	5	123.60	90	45
Pathum Wan	5	16.14	14	2
Huai Khwang	5	190.39	63	4
Prawet	4	745.00	74	50
Nong Chok	4	248.50	67	8
Bang Khae	4	93.11	51	12
Suan Luang	4	47.66	58	9
Thung Khru	4	58.80	46	8
Bang Phlat	3	335.00	112	24

NUMBER OF PERMITS OF INDUSTRIAL FACTORIES : 2016

Sorted by number of factories

Source : Department of Industrial Works, Ministry of Industry

(PART 2/3)

DISTRICTS	FACTORIES (Factories)	CAPITAL (Baht)	LABORS (Person)	
			MALE	FEMALE
Bang Kapi	3	25.80	16	3
Pom Prap Sattru Phai	3	10.12	42	24
Sathon	3	31.56	14	49
Bangkok Noi	3	52.45	28	27
Wang Thonglang	3	34.00	34	5
Lak Si	3	196.00	54	7
Khlong San	2	23.20	17	3
Min Buri	2	395.00	48	12
Lat Phrao	2	23.50	20	1
Chatuchak	2	30.40	20	3
Bang Kho Laem	2	20.50	52	-
Saphan Sung	2	304.00	55	5
Bang Na	1	25.00	14	1
Khan Na Yao	1	0.94	6	2
Khlong Toei	1	15.00	15	-
Taling Chan	1	400.00	36	-
Phra Khanong	1	-	10	7

NUMBER OF PERMITS OF INDUSTRIAL FACTORIES : 2016

Sorted by number of factories

Source : Department of Industrial Works, Ministry of Industry

(PART 3/3)

DISTRICTS	FACTORIES (Factories)	CAPITAL (Baht)	LABORS (Person)	
			MALE	FEMALE
Bang Rak	1	1.90	10	3
Thon Buri	-	-	-	-
Bang Sue	-	-	-	-
Bang Khen	-	-	-	-
Sai Mai	-	-	-	-
Khlong Sam Wa	-	-	-	-
Don Mueang	-	-	-	-
Din Daeng	-	-	-	-
Thawi Watthana	-	-	-	-
Ratchathewi	-	-	-	-
Vadhana	-	-	-	-
Bangkok Yai	-	-	-	-
Dusit	-	-	-	-
Phaya Thai	-	-	-	-
Phra Nakhon	-	-	-	-
Samphanthawong	-	-	-	-
TOTAL	193	7,302.71	3,010	2,120

COMPARISON OF BMA ACTUAL REVENUE AND ACTUAL EXPENDITURE IN FISCAL YEAR : 2004 - 2016

Source : Account Division, Finance Department

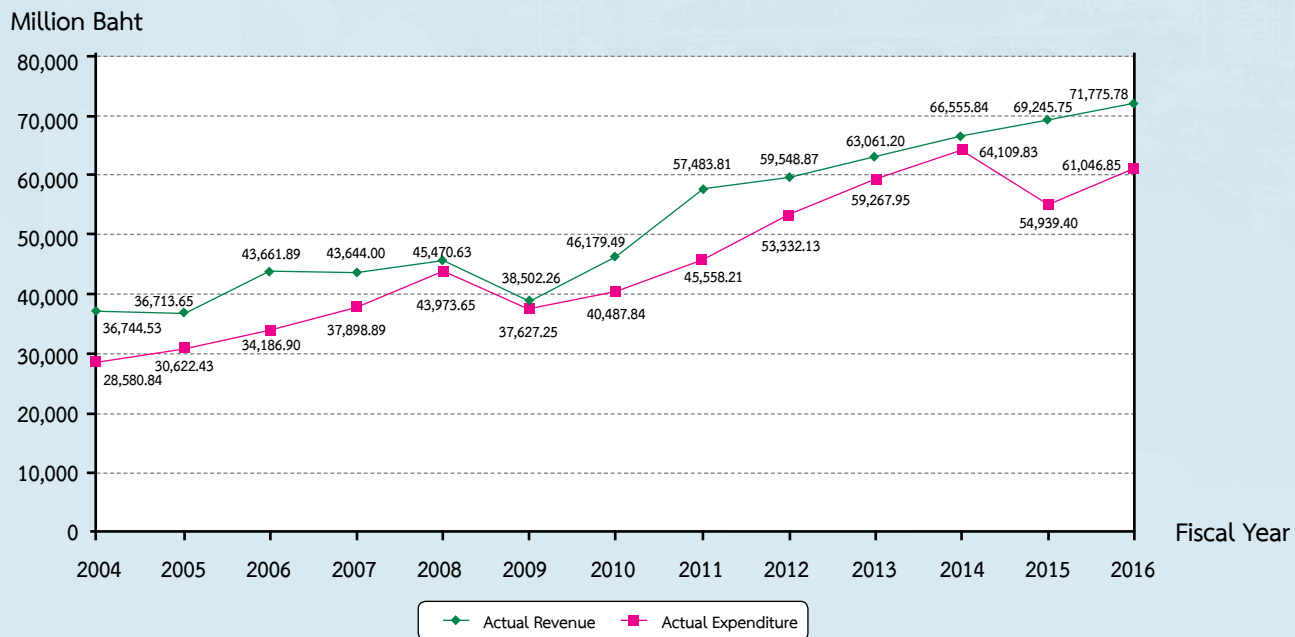
Note : 1. In Fiscal Year 2016, actual revenue and actual expenditure is the total before account revision

2. *Actual expenditure in Fiscal Year 2016 is the total expenditure excluding money set aside for a yearly overlapping withdrawal

3. This figure does not include special revenue and special expenditure

FISCAL YEAR	ACTUAL REVENUE (Baht)	ACTUAL EXPENDITURE (Including money set aside for a yearly overlapping withdrawal) (Baht)	BUDGET SURPLUS	
			AMOUNT (Baht)	PERCENT OF REVENUE
2004	36,744,530,566.88	28,580,837,524.90	8,163,693,041.98	22.22
2005	36,713,654,374.03	30,622,428,099.59	6,091,226,274.44	16.59
2006	43,661,886,232.20	34,186,903,058.30	9,474,983,173.90	21.70
2007	43,644,003,524.29	37,898,886,462.51	5,745,117,061.78	13.16
2008	45,470,633,351.60	43,973,654,264.54	1,496,979,087.06	3.29
2009	38,502,264,122.50	37,627,246,253.55	875,017,868.95	2.27
2010	46,179,488,877.63	40,487,843,226.12	5,691,645,651.51	12.33
2011	57,483,806,592.42	45,558,211,027.17	11,925,595,565.25	20.75
2012	59,548,868,221.97	53,332,127,989.28	6,216,740,232.69	10.44
2013	63,061,200,856.26	59,267,953,742.61	3,793,247,113.65	6.02
2014	66,555,841,051.95	64,109,830,987.04	2,446,010,064.91	3.68
2015	69,245,754,964.82	54,939,397,143.70	14,306,357,821.12	20.66
2016	71,775,779,958.58	61,046,845,342.65*	10,728,934,615.93	14.95

COMPARISON OF BMA ACTUAL REVENUE AND ACTUAL EXPENDITURE IN FISCAL YEAR : 2004 - 2016



Source : Account Division, Finance Department

BMA ACTUAL REVENUE AND ACTUAL EXPENDITURE IN FISCAL YEAR : 2004 - 2016 AND FORECAST OF FISCAL YEAR 2017 AND 2018

Source : Fiscal Year 2004 - 2016 from Account Division, Finance Department

Forecast of Fiscal Year 2017 and 2018 by Administrative Strategy Division, Strategy and Evaluation Department

Note : 1. In Fiscal Year 2015, BMA actual revenue and actual expenditure is the total before account revision

2. *Actual expenditure in Fiscal Year 2016 is the total expenditure excluding money set aside for a yearly overlapping withdrawal

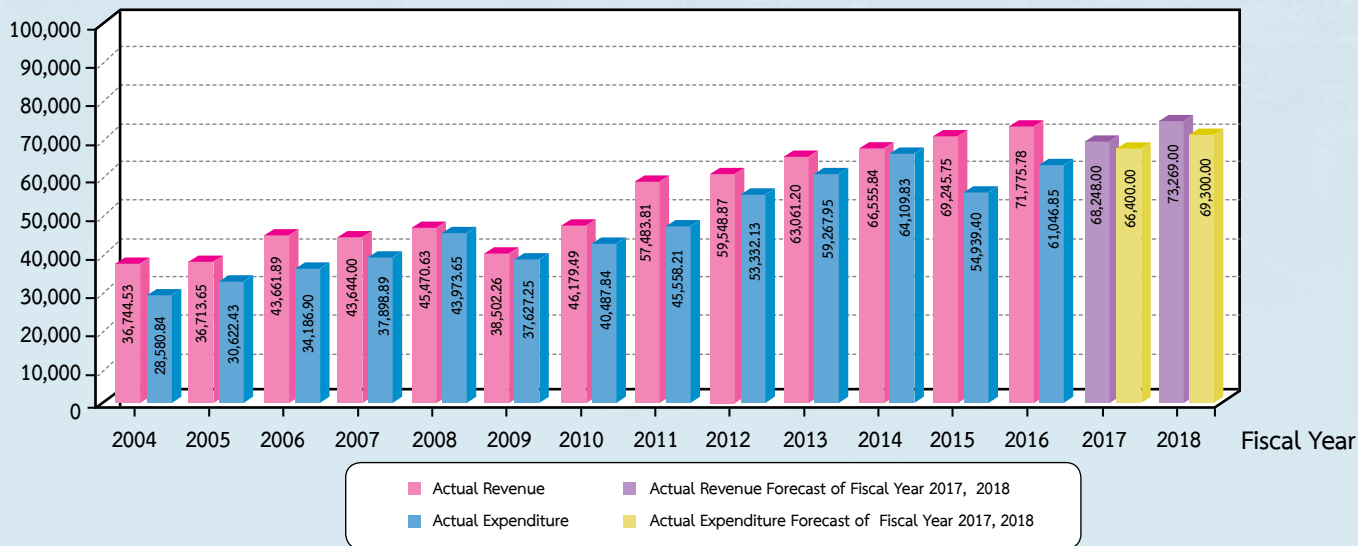
3. This figure does not include special revenue and special expenditure

(Baht)

FISCAL YEAR	ACTUAL REVENUE	ACTUAL EXPENDITURE (Including money set aside for a yearly overlapping withdrawal)
2004	36,744,530,566.88	28,580,837,524.90
2005	36,713,654,374.03	30,622,428,099.59
2006	43,661,886,232.20	34,186,903,058.30
2007	43,644,003,524.29	37,898,886,462.51
2008	45,470,633,351.60	43,973,654,264.54
2009	38,502,264,122.50	37,627,246,253.55
2010	46,179,488,877.63	40,487,843,226.12
2011	57,483,806,592.42	45,558,211,027.17
2012	59,548,868,221.97	53,332,127,989.28
2013	63,061,200,856.26	59,267,953,742.61
2014	66,555,841,051.95	64,109,830,987.04
2015	69,245,754,964.82	54,939,397,143.70
2016	71,775,779,958.58	61,046,845,342.65*
Equation of Forecast	$y = (2.3 \times 10^{10}) + (4.3 \times 10^9)x - (3.0 \times 10^8)x^2 + (1.3 \times 10^7)x^3$	$y = (2 \times 10^{10}) + (2.9 \times 10^9)x$
Forecast of Fiscal Year 2017	68,248,000,000.00	66,400,000,000.00
Forecast of Fiscal Year 2018	73,269,000,000.00	69,300,000,000.00

BMA ACTUAL REVENUE AND ACTUAL EXPENDITURE IN FISCAL YEAR : 2004 - 2016 AND FORECAST OF FISCAL YEAR 2017 AND 2018

Million Baht



Source : Fiscal Year 2004 - 2016 from Account Division, Finance Department

Forecast of Fiscal Year 2017 and 2018 by Administrative Strategy Division, Strategy and Evaluation Department

COMPARISON OF BMA ESTIMATED REVENUE AND ACTUAL REVENUE
APPROPRIATION BY TYPE OF REVENUE
FISCAL YEAR : 2015 - 2017

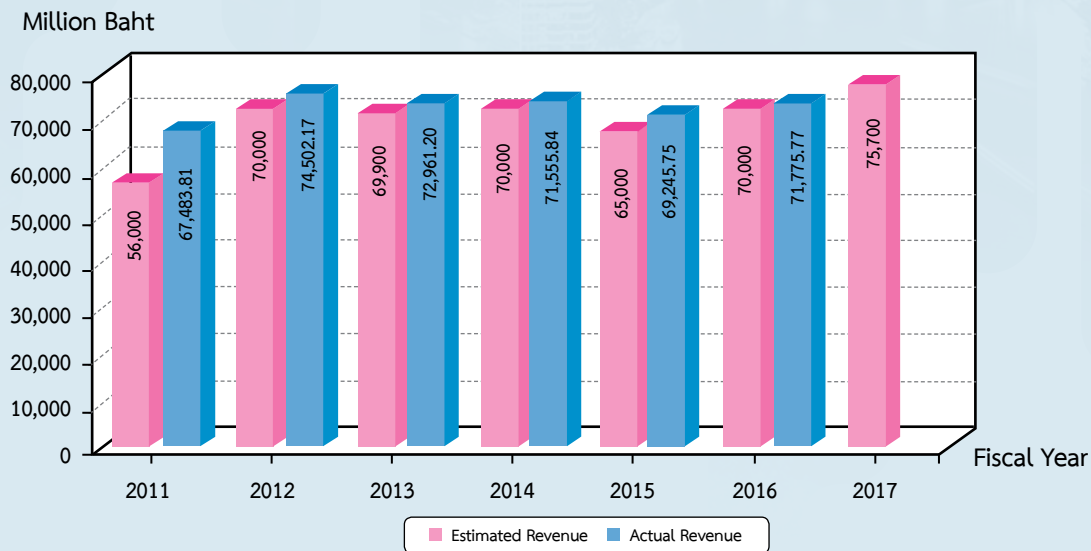
Source : Account Division, Finance Department

Note : Actual revenue of Fiscal Year 2015 is the total before account revision

(Million Baht)

TYPE OF REVENUE	FISCAL YEAR 2015		FISCAL YEAR 2016		FISCAL YEAR 2017
	ESTIMATED REVENUE	ACTUAL REVENUE	ESTIMATED REVENUE	ACTUAL REVENUE	ESTIMATED REVENUE
A. Regular Revenue	65,000.00	69,245.75	70,000.00	71,775.77	75,700.00
1. Local Taxes	62,162.80	64,737.20	66,932.80	67,836.04	71,520.00
- BMA collected	10,847.80	12,447.98	12,132.80	13,292.55	15,520.00
- Others collected	51,315.00	52,289.21	54,800.00	54,543.49	56,000.00
2. Fee, Fine, Permits and Service Charge	1,080.00	1,151.39	1,100.00	1,185.83	1,200.00
3. Rental from BMA Assets	755.00	841.44	900.00	799.05	1,000.00
4. Income from Public Utilities and Enterprises	73.20	61.38	56.20	44.52	60.00
5. Income from Miscellaneous Activities	929.00	2,454.34	1,011.00	1,910.33	1,920.00
B. Special Revenue	-	-	-	-	-
Accumulate	-	-	-	-	-
Grand Total Revenues	65,000.00	69,245.75	70,000.00	71,775.77	75,700.00

COMPARISON OF BMA ESTIMATED REVENUE AND ACTUAL REVENUE APPROPRIATION BY TYPE OF REVENUE FISCAL YEAR : 2011 - 2017



Source : Account Division, Finance Department

BMA'S BUDGET EXPENDITURE APPROPRIATION BY BANGKOK DEVELOPMENT PLAN FISCAL YEAR : 2016 - 2017

Source : The Bangkok Metropolitan Administration Budget Department

Note : The above figure does not include the appropriation of BMA's Commercial Offices amount 577,417,000 Baht

(Million Baht)

BANGKOK DEVELOPMENT PLAN	2016		2017	
	BUDGET	PERCENT OF BUDGET	BUDGET	PERCENT OF BUDGET
1. General Administration	17,711.18	23.60	24,094.68	32.10
2. Public Cleaning and Orderliness	13,089.53	17.44	11,649.41	15.52
3. Civil Works and Traffic System	12,415.06	16.54	14,743.36	19.64
4. Water Drainage and Sewage Management	9,135.33	12.17	6,827.09	9.10
5. Social Development and Services	7,109.94	9.47	7,459.92	9.94
6. Public Health	5,199.13	6.93	6,141.58	8.18
7. Education	5,339.83	7.11	4,142.36	5.52
TOTAL	70,000.00	100.00	75,058.40	100.00

BUDGET EXPENDITURE APPROPRIATION BY DEPARTMENTS

FISCAL YEAR : 2011 - 2017

Sorted by amount of 2017

(PART 1/2)

Source : The Bangkok Metropolitan Administration Budget Department

(Million Baht)

DEPARTMENTS	2011	2012	2013	2014	2015	2016	2017
Contingent Fund	2,576.4352	7,646.3620	6,650.3236	8,078.0000	7,252.9410	9,227.6900	13,588.4941
Public Works Department	3,037.9032	2,934.2725	3,214.1869	3,308.9360	3,920.3422	5,145.8520	8,241.9105
Environment Department	3,030.3342	4,309.5048	6,534.6793	7,116.5358	8,375.6140	8,317.9352	6,916.6515
Drainage and Sewerage Department	3,189.9510	3,941.1390	4,421.5779	4,958.4720	5,933.9670	8,080.0879	5,881.8990
Finance Department	2,594.1761	2,540.5744	2,826.9028	3,011.9560	3,337.5450	3,127.7471	4,551.6330
Traffic and Transportation Department	3,858.4349	3,409.1607	3,102.9542	5,627.1741	4,047.3330	4,280.3335	3,924.9304
Medical Service Department	3,806.9948	2,699.5405	2,596.3270	2,829.7900	2,827.1900	2,878.0660	3,308.0820
Health Department	1,682.0471	1,976.8828	2,180.5240	2,237.9159	2,205.1220	2,053.4514	2,502.0308
Navamindradiraj University	-	1,447.6530	2,177.4337	1,641.5006	1,814.9583	1,672.5980	1,984.1914
Culture, Sports and Tourism Department	1,272.3442	1,740.9455	2,049.2427	1,615.0814	1,763.0202	1,256.4986	1,575.7960
Education Department	1,420.3090	2,289.5539	2,853.4839	2,361.5153	1,916.7886	1,960.8825	1,002.7544
Office of the Permanent Secretary for the Bangkok Metropolitan Administration	946.2472	1,002.1530	915.8884	1,024.2883	1,109.8421	949.4761	971.7452

BUDGET EXPENDITURE APPROPRIATION BY DEPARTMENTS
FISCAL YEAR : 2011 - 2017
Sorted by amount of 2017

(PART 2/2)
(Million Baht)

Source : The Bangkok Metropolitan Administration Budget Department

DEPARTMENTS	2011	2012	2013	2014	2015	2016	2017
Strategy and Evaluation Department	213.1860	348.3987	551.5750	331.9288	313.9730	417.9280	404.6414
Social Development Department	493.3740	477.8366	590.7332	634.8312	489.5410	540.4080	393.5098
Fire and Rescue Department	422.8820	529.5685	727.3000	197.5720	857.5231	1,079.6090	390.9940
City Law Enforcement Department	170.6320	192.3159	254.8280	392.2732	391.9216	224.6840	193.8360
City Planning Department	289.8860	132.9510	137.6920	250.5710	252.5860	238.8590	168.9990
Office of the Bangkok Metropolitan Administration Civil Service Commission	99.7420	121.7689	133.3640	150.0050	124.5060	133.1490	122.1734
The Bangkok Metropolitan Council Secretariat	321.3480	395.7642	402.4530	445.9930	70.1930	95.0832	75.1577
The Bangkok Metropolitan Administration Budget Department	56.7202	63.2156	70.5570	72.5900	67.2470	72.7230	73.0340
The Governor of Bangkok Secretariat	59.6553	58.0485	68.7585	78.7600	78.2530	66.8140	70.9570
TOTAL	31,618.2916	40,615.5668	45,246.2817	48,554.3099	49,921.2863	54,807.2966	58,504.3110

BMA'S BUDGET EXPENDITURE APPROPRIATION BY DISTRICTS

FISCAL YEAR : 2015 - 2017

Sorted by amount of 2017

Source : The Bangkok Metropolitan Administration Budget Department

(Million Baht)

DISTRICTS	2015	2016	2017	DISTRICTS	2015	2016	2017
Lat Krabang	574.7838	573.0811	603.2300	Thung Khru	346.0208	312.6375	348.5609
Wang Thonglang	351.0072	381.6806	577.3390	Din Daeng	332.7176	324.4431	343.8390
Bang Khun Thian	565.9809	523.1415	568.6270	Thawi Watthana	306.4228	319.4781	340.0051
Nong Chok	506.0920	560.5256	542.7778	Phaya Thai	275.7198	296.5289	339.7092
Chatuchak	545.3800	500.3675	534.9680	Huai Khwang	320.0558	318.7545	337.6982
Bang Kapi	436.3453	482.1096	508.5825	Lak Si	370.0610	300.0381	332.2570
Bang Khae	464.4712	438.9405	494.5557	Pathum Wan	342.1223	324.2571	331.5600
Prawet	461.4299	455.3383	472.2460	Ratchathewi	324.0181	322.2188	328.2948
Min Buri	459.8479	442.6563	442.3605	Vadhana	289.1459	315.3685	327.9998
Chom Thong	433.9377	427.2806	436.2460	Bang Bon	318.1686	361.7931	326.8276
Nong Khaem	461.0828	421.7365	434.2540	Bang Phlat	298.3443	313.4436	326.3003
Khlong Sam Wa	408.2969	405.3321	430.3660	Bang Sue	301.4210	325.6615	323.6870
Sai Mai	442.7303	463.9382	417.0031	Saphan Sung	327.2108	289.5706	316.1650
Phra Nakhon	371.2396	381.0948	411.5540	Khlong San	281.8954	306.9766	315.4565
Bang Khen	354.6594	395.7216	400.6545	Phra Khanong	288.6895	278.8975	309.7290
Suan Luang	360.0005	367.8245	398.5620	Bang Kho Laem	280.1411	295.2046	305.8080
Bueng Kum	450.3827	546.9511	398.3130	Rat Burana	289.9863	297.5926	304.5680
Don Mueang	390.8119	373.2351	392.9310	Bang Na	283.9439	301.1355	303.0225
Thon Buri	359.7115	396.5606	388.5860	Yan Nawa	282.4176	301.5656	297.2460
Khlong Toei	366.6756	367.8585	384.2990	Khan Na Yao	254.2063	273.3785	285.3476
Bangkok Noi	418.6803	607.8486	381.0290	Bangkok Yai	237.3807	243.3645	263.3534
Lat Phrao	378.6477	355.4667	376.6220	Sathon	244.7406	240.5195	253.8359
Dusit	362.1379	364.8545	370.7670	Bang Rak	226.7343	226.7996	247.9990
Phasi Charoen	338.6901	316.5651	354.4560	Pom Prap Sattru Phai	225.1968	228.7314	239.2590
Taling Chan	321.9673	314.5961	350.1980	Samphanthawong	217.8412	197.0596	195.9280
TOTAL					17,849.5929	18,180.1245	18,714.9839

TAXES COLLECTED BY BMA FISCAL YEAR : 2016

Sorted by house and building taxes

Source : Revenue Division, Finance Department

Note : 1. The total before account revision; as October 27, 2016

2. The total of local development taxes (5% deduction)

(PART 1/3)

DISTRICTS	AMOUNT (Baht)		
	HOUSE AND BUILDING TAXES	LOCAL DEVELOPMENT TAXES	SIGNBOARD TAXES
Pathum Wan	1,350,722,194.93	3,924,307.75	39,024,300.30
Vadhana	791,043,972.99	4,073,910.33	24,462,190.70
Bang Rak	768,601,556.45	1,747,022.45	23,034,407.01
Chatuchak	757,456,982.02	3,546,577.38	103,416,452.59
Khlong Toei	644,124,203.37	5,020,920.05	37,623,050.05
Ratchathewi	480,406,337.19	3,128,086.49	39,716,830.85
Huai Khwang	435,485,819.26	7,176,583.17	30,799,663.06
Sathon	391,918,684.79	3,348,369.22	14,774,889.10
Bang Kapi	343,540,995.54	9,023,547.95	21,837,554.70
Yan Nawa	316,416,135.07	4,267,540.38	20,017,027.66
Din Daeng	313,632,867.32	2,123,099.68	21,959,108.00
Bang Na	303,859,630.11	7,199,368.12	18,289,912.40
Phaya Thai	283,808,298.33	4,483,063.80	15,701,055.02
Lat Krabang	272,476,114.44	4,369,582.13	30,119,598.94
Prawet	231,775,928.97	6,126,319.02	25,436,939.23
Wang Thonglang	220,134,980.31	2,373,960.25	17,065,018.66
Phra Nakhon	213,616,494.90	1,711,337.10	9,856,741.45
Lak Si	207,321,143.61	1,611,602.48	11,470,433.78

TAXES COLLECTED BY BMA FISCAL YEAR : 2016

Sorted by house and building taxes

Source : Revenue Division, Finance Department

Note : 1. The total before account revision; as October 27, 2016

2. The total of local development taxes (5% deduction)

(PART 2/3)

DISTRICTS	AMOUNT (Baht)		
	HOUSE AND BUILDING TAXES	LOCAL DEVELOPMENT TAXES	SIGNBOARD TAXES
Pom Prap Sattru Phai	197,231,121.21	940,263.62	10,738,774.76
Don Mueang	183,996,533.59	2,442,304.76	13,975,020.50
Suan Luang	174,539,664.29	4,592,207.83	19,680,025.26
Bang Sue	166,170,584.54	2,736,316.61	11,627,014.36
Bangkok Noi	159,598,918.70	1,791,281.03	14,897,824.67
Khan Na Yao	158,395,242.14	2,348,324.13	18,175,122.16
Bang Khun Thian	156,499,333.46	2,581,102.32	16,588,380.81
Bang Khae	155,157,272.97	2,198,385.58	17,301,320.12
Samphanthawong	154,145,209.72	516,500.09	11,309,594.90
Bang Khen	153,292,370.98	1,516,568.75	13,963,634.06
Bang Kho Laem	147,286,456.97	3,768,455.94	8,731,359.04
Khlong San	145,979,382.64	1,148,827.81	11,027,832.30
Phra Khanong	142,260,479.35	3,298,966.06	8,430,470.02
Min Buri	140,654,260.31	2,592,447.46	17,578,809.72
Thon Buri	134,093,303.24	1,417,723.79	13,164,891.00
Phasi Charoen	131,878,391.68	1,311,318.92	8,651,477.64
Bang Phlat	125,477,652.01	1,425,662.63	9,178,080.02
Chom Thong	115,576,671.15	1,687,949.17	7,992,980.50

TAXES COLLECTED BY BMA FISCAL YEAR : 2016

Sorted by house and building taxes

Source : Revenue Division, Finance Department

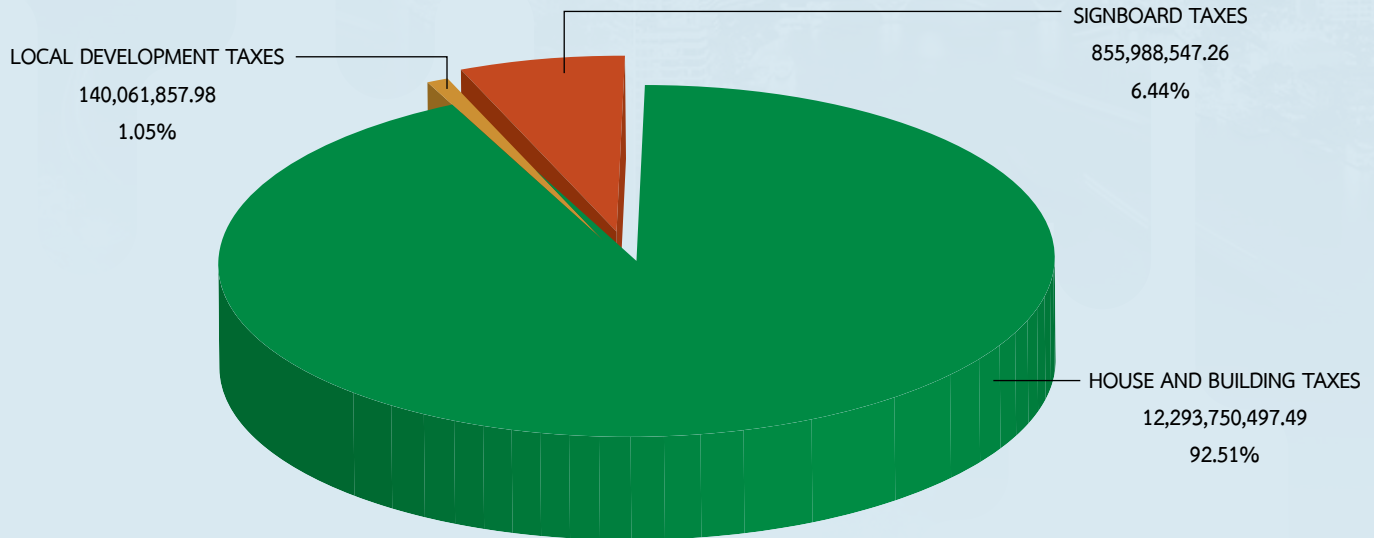
Note : 1. The total before account revision; as October 27, 2016

2. The total of local development taxes (5% deduction)

(PART 3/3)

DISTRICTS	AMOUNT (Baht)		
	HOUSE AND BUILDING TAXES	LOCAL DEVELOPMENT TAXES	SIGNBOARD TAXES
Rat Burana	109,109,362.41	1,581,128.18	7,440,344.34
Dusit	96,006,260.58	1,618,194.12	4,098,890.30
Nong Khaem	95,242,110.64	2,233,756.30	9,663,889.23
Bang Bon	91,764,146.38	1,650,135.84	10,128,324.17
Lat Phrao	90,920,010.27	3,674,424.21	14,525,629.99
Buang Kum	80,294,383.74	1,706,766.89	16,022,584.85
Taling Chan	69,902,551.73	1,565,013.48	8,672,941.94
Thung Khru	65,744,266.98	1,266,916.84	5,151,641.80
Sai Mai	60,502,683.62	1,478,746.54	10,314,905.42
Nong Chok	58,029,175.10	2,482,734.18	5,769,216.48
Saphan Sung	53,926,344.16	2,182,447.32	6,841,085.30
Thawi Watthana	43,957,121.55	1,674,184.31	8,621,074.30
Bangkok Yai	42,960,322.83	945,244.66	2,951,425.33
Khlong Sam Wa	42,161,542.43	2,432,360.86	8,168,808.47
Revenue Division	224,655,026.52	-	-
TOTAL	12,293,750,497.49	140,061,857.98	855,988,547.26

TAXES COLLECTED BY BMA FISCAL YEAR : 2016



Source : Revenue Division, Finance Department

TAXES COLLECTED BY BMA FISCAL YEAR : 2004 - 2016 AND FORECAST OF FISCAL YEAR 2017 AND 2018

Source : Fiscal Year 2004-2016 from Revenue Division, Finance Department

Forecast of Fiscal Year 2017 and 2018 by Administrative Strategy Division, Strategy and Evaluation Department

Note : 1. The total before account revision; as October 27, 2016

2. The total of local development taxes (5% deduction)

(Baht)

FISCAL YEAR	AMOUNT		
	HOUSE AND BUILDING TAXES	LOCAL DEVELOPMENT TAXES	SIGNBOARD TAXES
2004	6,382,190,662.54	135,419,975.56	436,640,609.21
2005	6,689,887,998.99	130,109,853.94	495,335,966.47
2006	7,353,674,828.61	134,115,209.02	585,980,415.12
2007	7,964,639,824.92	134,066,109.30	623,526,096.51
2008	8,470,626,237.19	133,703,590.19	632,988,292.78
2009	8,622,460,987.69	130,589,019.17	660,395,372.54
2010	8,696,760,616.67	133,652,574.71	675,150,201.24
2011	9,477,425,603.40	132,785,887.08	704,731,023.79
2012	9,659,196,057.29	132,133,283.76	708,591,103.96
2013	10,429,694,431.80	129,891,517.62	744,166,979.83
2014	11,073,609,825.38	130,190,576.00	773,772,786.96
2015	11,514,122,392.37	130,649,454.52	800,772,424.26
2016	12,293,750,497.49	140,061,857.98	855,988,547.26
Equation of Forecast	$y = (4.6 \times 10^9) + (4.6 \times 10^8)x$	$y = (1.1 \times 10^9) + 7,531,469x - 920,271x^2 + 33,534.6x^3$	$y = (2.9 \times 10^8) + (4.8 \times 10^7)x - 923,272x^2$
Forecast of Fiscal Year 2017	12,420,000,000.00	136,832,143.80	839,174,392.00
Forecast of Fiscal Year 2018	12,880,000,000.00	142,972,425.20	854,859,872.00

NUMBER OF LAND TRAFFIC ACCIDENTS IN BANGKOK METROPOLIS : 1998 - 2016

Source : Fifth Sub - Division, Traffic Police Division

YEAR	NUMBER OF ACCIDENTS (Case)	NUMBER OF THE INJURED (Person)	NUMBER OF FATALS (Person)	DAMAGED PROPERTIES (Baht)
1998	47,000	18,920	732	361,316,841
1999	37,868	17,104	594	257,729,285
2000	42,032	19,870	673	299,329,619
2001	44,466	19,566	695	326,223,704
2002	45,388	20,483	843	474,620,598
2003	52,400	22,439	840	488,425,797
2004	54,389	22,955	806	466,029,181
2005	50,126	22,957	697	402,550,675
2006	49,320	22,107	632	394,811,424
2007	45,285	20,597	671	369,831,719
2008	41,328	18,854	598	349,811,797
2009	41,800	17,567	538	353,240,806
2010	37,985	16,612	456	426,419,428
2011	32,492	15,085	399	347,540,952
2012	32,393	13,760	356	390,145,184
2013	29,963	11,473	352	330,910,456
2014	27,460	11,650	262	316,856,202
2015	22,539	6,635	174	120,668,296
2016	31,671	899	260	17,145,825

NUMBER AND AREA OF PERMITTED BUILDING CONSTRUCTION BY TYPE AND DISTRICTS YEAR : 2016

Sorted by total area

Source : Policy and Planning Division, City Planning Department

(PART 1/8)

DISTRICTS	TOTAL		RESIDENTIAL		COMMERCIAL	
	NUMBER	AREA (m ²)	NUMBER	AREA (m ²)	NUMBER	AREA (m ²)
Vadhana	230	535,161.10	184	461,316.14	23	26,633.96
Bang Khen	1,282	464,996.00	1,158	422,980.00	37	422,980.00
Phra Khanong	212	464,305.05	178	270,334.05	21	179,914.00
Lat Krabang	1,377	434,805.88	1,149	280,582.60	168	63,284.28
Prawet	1,748	410,588.00	1,542	283,696.00	113	32,725.00
Pathum Wan	11	408,559.00	6	167,581.00	3	228,919.00
Huai Khwang	86	406,578.44	63	138,642.44	12	25,753.00
Bang Khae	641	387,831.58	560	266,313.69	47	95,266.40
Bang Na	266	337,693.60	158	235,989.25	75	44,312.00
Suan Luang	336	308,524.40	282	259,203.00	35	23,066.00
Bang Khun Thian	896	303,503.00	748	153,713.00	45	31,334.00
Bang Kapi	436	295,078.10	359	216,015.10	36	23,732.00
Nong Chok	851	283,505.50	790	234,990.50	28	15,928.00
Thawi Watthana	709	266,281.55	614	227,853.55	34	9,755.00
Nong Khaem	605	250,684.00	532	178,512.00	24	2,373.00
Khlong Sam Wa	1,348	247,090.00	1,210	199,801.00	66	11,118.00
Lat Phrao	456	244,896.60	364	171,377.00	50	23,907.00
Phasi Charoen	433	227,403.51	376	197,465.51	31	9,805.00
Khan Na Yao	376	222,876.08	316	119,769.50	19	17,062.00
Sai Mai	1,341	220,215.00	1,265	191,116.00	25	6,400.00
Chatuchak	250	217,755.78	216	140,882.95	12	59,238.25
Khlong Toei	63	208,981.00	44	133,691.00	14	68,619.00
Don Mueang	429	191,458.85	369	128,021.85	29	11,460.00
Min Buri	830	189,915.00	796	163,255.00	7	6,283.00
Bang Phlat	135	189,814.00	118	165,449.00	14	4,009.00



NUMBER AND AREA OF PERMITTED BUILDING CONSTRUCTION BY TYPE AND DISTRICTS YEAR : 2016

Sorted by total area

Source : Policy and Planning Division, City Planning Department

(PART 2/8)

DISTRICTS	TOTAL		RESIDENTIAL		COMMERCIAL	
	NUMBER	AREA (m ²)	NUMBER	AREA (m ²)	NUMBER	AREA (m ²)
Saphan Sung	380	187,047.00	327	145,116.00	25	7,437.00
Thung Khru	599	167,445.00	528	124,880.00	30	13,632.00
Bang Sue	132	159,626.50	113	38,707.50	9	113,319.00
Thon Buri	77	156,023.00	67	150,073.00	6	1,901.00
Yan Nawa	98	129,419.78	65	64,460.53	20	15,523.00
Bang Rak	31	125,375.00	17	94,083.00	7	18,441.00
Bueng Kum	327	125,320.00	229	84,303.00	71	18,593.00
Lak Si	117	112,091.33	89	54,694.33	8	12,174.00
Phaya Thai	90	108,462.00	81	58,757.00	5	47,666.00
Din Daeng	122	102,672.20	103	84,194.00	7	4,516.20
Taling Chan	359	92,822.10	285	74,571.10	39	7,172.00
Bang Bon	315	91,715.93	250	64,913.93	29	6,483.00
Sathon	43	70,769.39	30	58,366.39	4	4,563.00
Wang Thonglang	116	67,578.00	86	40,786.00	21	21,982.00
Bangkok Yai	57	67,468.92	52	18,040.92	4	49,420.00
Rat Burana	115	59,509.04	93	41,405.86	14	9,068.38
Chom Thong	129	58,690.90	98	50,307.90	28	5,288.00
Bang Kho Laem	85	52,757.30	63	26,092.30	10	11,292.00
Khlong San	51	50,955.00	46	43,124.00	1	125.00
Ratchathewi	24	43,135.10	17	14,306.60	6	26,858.50
Bangkok Noi	60	38,280.88	53	26,399.88	3	1,726.00
Phra Nakhon	29	22,474.00	21	9,574.00	7	10,940.00
Dusit	43	13,911.20	41	11,646.20	1	140.00
Samphanthawong	8	4,192.70	6	1,472.70	2	2,720.00
Pom Prap Sattru Phai	4	862.40	1	86.40	3	776.00
TOTAL	18,758	9,827,105.69	16,158	6,788,913.67	1,328	1,855,632.97

NUMBER AND AREA OF PERMITTED BUILDING CONSTRUCTION BY TYPE AND DISTRICTS YEAR : 2016

Sorted by total area

Source : Policy and Planning Division, City Planning Department

(PART 3/8)

DISTRICTS	COMMERCIAL & RESIDENTIAL		INDUSTRIAL		WAREHOUSE	
	NUMBER	AREA (m ²)	NUMBER	AREA (m ²)	NUMBER	AREA (m ²)
Vadhana	13	24,254.00	-	-	-	-
Bang Khen	71	21,122.00	-	-	7	5,168.00
Phra Khanong	8	7,861.00	-	-	-	-
Lat Krabang	38	31,088.00	-	-	9	45,320.00
Prawet	80	33,530.00	1	732.00	3	8,196.00
Pathum Wan	1	8,104.00	-	-	-	-
Huai Khwang	3	107,198.00	-	-	1	268.00
Bang Khae	25	13,226.22	-	-	1	2,267.00
Bang Na	16	38,445.35	-	-	3	3,507.00
Suan Luang	14	14,664.00	-	-	1	640.00
Bang Khun Thian	82	81,260.00	2	9,047.00	11	22,478.00
Bang Kapi	31	32,399.00	1	688.00	2	3,036.00
Nong Chok	13	9,502.00	1	615.00	12	12,131.00
Thawi Watthana	47	21,578.00	-	-	1	156.00
Nong Khaem	44	69,106.00	1	278.00	1	235.00
Khlong Sam Wa	58	27,851.00	1	2,046.00	2	1,824.00
Lat Phrao	36	48,029.00	1	778.00	-	-
Phasi Charoen	21	11,809.00	-	-	-	-
Khan Na Yao	28	41,537.00	-	-	3	940.00
Sai Mai	50	22,622.00	-	-	1	77.00
Chatuchak	18	16,358.00	-	-	3	1,230.00
Khlong Toei	3	2,753.00	-	-	-	-
Don Mueang	24	50,174.00	-	-	-	-
Min Buri	23	10,170.00	-	-	-	-
Bang Phlat	3	20,356.00	-	-	-	-

NUMBER AND AREA OF PERMITTED BUILDING CONSTRUCTION BY TYPE AND DISTRICTS YEAR : 2016

Sorted by total area

Source : Policy and Planning Division, City Planning Department

(PART 4/8)

DISTRICTS	COMMERCIAL & RESIDENTIAL		INDUSTRIAL		WAREHOUSE	
	NUMBER	AREA (m ²)	NUMBER	AREA (m ²)	NUMBER	AREA (m ²)
Saphan Sung	26	34,092.00	-	-	1	360.00
Thung Khru	33	22,656.00	-	-	1	199.00
Bang Sue	8	6,087.00	-	-	-	-
Thon Buri	1	2,152.00	-	-	-	-
Yan Nawa	8	49,182.00	-	-	1	50.00
Bang Rak	5	2,917.00	-	-	-	-
Bueng Kum	24	21,297.00	-	-	1	36.00
Lak Si	7	34,137.00	-	-	2	9,868.00
Phaya Thai	3	1,925.00	-	-	-	-
Din Daeng	6	4,446.00	1	135.00	-	-
Taling Chan	30	9,234.00	-	-	4	1,815.00
Bang Bon	26	17,492.00	1	824.00	4	1,355.00
Sathon	6	7,236.00	2	596.00	-	-
Wang Thonglang	8	4,730.00	-	-	-	-
Bangkok Yai	-	-	-	-	-	-
Rat Burana	8	9,034.80	-	-	-	-
Chom Thong	2	2,431.00	-	-	-	-
Bang Kho Laem	10	13,499.00	1	1,349.00	-	-
Khlong San	2	4,942.00	1	925.00	-	-
Ratchathewi	-	-	-	-	-	-
Bangkok Noi	1	4,849.00	-	-	-	-
Phra Nakhon	1	1,960.00	-	-	-	-
Dusit	1	2,125.00	-	-	-	-
Samphanthawong	-	-	-	-	-	-
Pom Prap Sattru Phai	-	-	-	-	-	-
TOTAL	966	1,021,420.37	14	18,013.00	75	121,156.00

NUMBER AND AREA OF PERMITTED BUILDING CONSTRUCTION BY TYPE AND DISTRICTS YEAR : 2016

Sorted by total area

Source : Policy and Planning Division, City Planning Department

(PART 5/8)

DISTRICTS	EDUCATION INSTITUTION		RELIGION PLACE		ORGANIZATION	
	NUMBER	AREA (m ²)	NUMBER	AREA (m ²)	NUMBER	AREA (m ²)
Vadhana	8	14,634.00	-	-	-	-
Bang Khen	2	866.00	2	801.00	-	-
Phra Khanong	1	1,770.00	-	-	-	-
Lat Krabang	2	9,270.00	1	149.00	-	-
Prawet	2	3,886.00	-	-	-	-
Pathum Wan	1	3,995.00	-	-	-	-
Huai Khwang	3	21,454.00	-	-	-	-
Bang Khae	1	167.00	-	-	-	-
Bang Na	3	686.00	1	362.00	-	-
Suan Luang	-	-	-	-	-	-
Bang Khun Thian	2	5,285.00	-	-	-	-
Bang Kapi	2	9,145.00	-	-	-	-
Nong Chok	2	1,927.00	2	358.00	-	-
Thawi Watthana	4	4,676.00	-	-	-	-
Nong Khaem	-	-	-	-	-	-
Khlong Sam Wa	1	2,276.00	-	-	-	-
Lat Phrao	-	-	-	-	-	-
Phasi Charoen	1	6,406.00	-	-	-	-
Khan Na Yao	2	576.00	-	-	-	-
Sai Mai	-	-	-	-	-	-
Chatuchak	-	-	-	-	-	-
Khlong Toei	2	3,918.00	-	-	-	-
Don Mueang	2	900.00	-	-	-	-
Min Buri	2	1,536.00	-	-	-	-
Bang Phlat	-	-	-	-	-	-

NUMBER AND AREA OF PERMITTED BUILDING CONSTRUCTION BY TYPE AND DISTRICTS YEAR : 2016

Sorted by total area

Source : Policy and Planning Division, City Planning Department

(PART 6/8)

DISTRICTS	EDUCATION INSTITUTION		RELIGION PLACE		ORGANIZATION	
	NUMBER	AREA (m ²)	NUMBER	AREA (m ²)	NUMBER	AREA (m ²)
Saphan Sung	-	-	1	42.00	-	-
Thung Khru	1	162.00	-	-	-	-
Bang Sue	-	-	-	-	-	-
Thon Buri	1	1,179.00	-	-	-	-
Yan Nawa	-	-	1	175.00	-	-
Bang Rak	1	194.00	-	-	-	-
Bueng Kum	1	830.00	-	-	-	-
Lak Si	1	184.00	-	-	-	-
Phaya Thai	-	-	-	-	-	-
Din Daeng	1	1,040.00	-	-	-	-
Taling Chan	-	-	-	-	-	-
Bang Bon	1	248.00	-	-	-	-
Sathon	-	-	-	-	-	-
Wang Thonglang	-	-	-	-	-	-
Bangkok Yai	-	-	-	-	-	-
Rat Burana	-	-	-	-	-	-
Chom Thong	1	664.00	-	-	-	-
Bang Kho Laem	-	-	-	-	-	-
Khlong San	1	1,839.00	-	-	-	-
Ratchathewi	1	1,970.00	-	-	-	-
Bangkok Noi	1	490.00	-	-	-	-
Phra Nakhon	-	-	-	-	-	-
Dusit	-	-	-	-	-	-
Samphanthawong	-	-	-	-	-	-
Pom Prap Sattru Phai	-	-	-	-	-	-
TOTAL	54	102,173.00	8	1,887.00	-	-

NUMBER AND AREA OF PERMITTED BUILDING CONSTRUCTION BY TYPE AND DISTRICTS YEAR : 2016

Sorted by total area

Source : Policy and Planning Division, City Planning Department

(PART 7/8)

DISTRICTS	HOSPITAL		CAR PARK		OTHERS	
	NUMBER	AREA (m ²)	NUMBER	AREA (m ²)	NUMBER	AREA (m ²)
Vadhana	2	8,323.00	-	-	-	-
Bang Khen	-	-	5	928.00	-	-
Phra Khanong	-	-	-	-	4	4,426.00
Lat Krabang	4	3,856.00	3	864.00	3	392.00
Prawet	1	47,108.00	2	332.00	4	383.00
Pathum Wan	-	-	-	-	-	-
Huai Khwang	2	105,381.00	1	7,845.00	1	37.00
Bang Khae	-	-	4	10,531.00	3	60.27
Bang Na	1	6,352.00	7	7,970.00	2	70.00
Suan Luang	-	-	3	10,927.00	1	24.40
Bang Khun Thian	-	-	1	80.00	5	306.00
Bang Kapi	2	9,432.00	2	627.00	1	4.00
Nong Chok	1	7,712.00	1	118.00	1	224.00
Thawi Watthana	-	-	4	2,034.00	5	229.00
Nong Khaem	-	-	2	128.00	1	52.00
Khlong Sam Wa	-	-	6	1,996.00	4	178.00
Lat Phrao	-	-	4	799.00	1	6.00
Phasi Charoen	1	1,560.00	-	-	3	358.00
Khan Na Yao	1	42,313.58	2	74.00	5	604.00
Sai Mai	-	-	-	-	-	-
Chatuchak	-	-	-	-	1	46.58
Khlong Toei	-	-	-	-	-	-
Don Mueang	-	-	3	838.00	2	65.00
Min Buri	-	-	1	256.00	1	8,415.00
Bang Phlat	-	-	-	-	-	-

NUMBER AND AREA OF PERMITTED BUILDING CONSTRUCTION BY TYPE AND DISTRICTS YEAR : 2016

Sorted by total area

Source : Policy and Planning Division, City Planning Department

(PART 8/8)

DISTRICTS	HOSPITAL		CAR PARK		OTHERS	
	NUMBER	AREA (m ²)	NUMBER	AREA (m ²)	NUMBER	AREA (m ²)
Saphan Sung	-	-	-	-	-	-
Thung Khru	-	-	1	5,416.00	5	500.00
Bang Sue	-	-	1	141.00	1	1,372.00
Thon Buri	-	-	1	709.00	1	9.00
Yan Nawa	-	-	-	-	3	29.25
Bang Rak	-	-	1	9,740.00	-	-
Bueng Kum	-	-	-	-	1	261.00
Lak Si	-	-	9	1,026.00	1	8.00
Phaya Thai	-	-	1	114.00	-	-
Din Daeng	-	-	4	9,356.00	1	25.00
Taling Chan	-	-	-	-	1	30.00
Bang Bon	-	-	1	127.00	3	273.00
Sathon	-	-	-	-	1	8.00
Wang Thonglang	-	-	1	80.00	-	-
Bangkok Yai	-	-	-	-	1	8.00
Rat Burana	-	-	-	-	-	-
Chom Thong	-	-	-	-	-	-
Bang Kho Laem	-	-	2	525.00	-	-
Khlong San	-	-	-	-	-	-
Ratchathewi	-	-	-	-	-	-
Bangkok Noi	-	-	2	4,816.00	-	-
Phra Nakhon	-	-	-	-	-	-
Dusit	-	-	-	-	-	-
Samphanthawong	-	-	-	-	-	-
Pom Prap Sattru Phai	-	-	-	-	-	-
TOTAL	15	232,037.58	75	78,397.00	67	18,403.50



GARBAGE COLLECTION : 2016

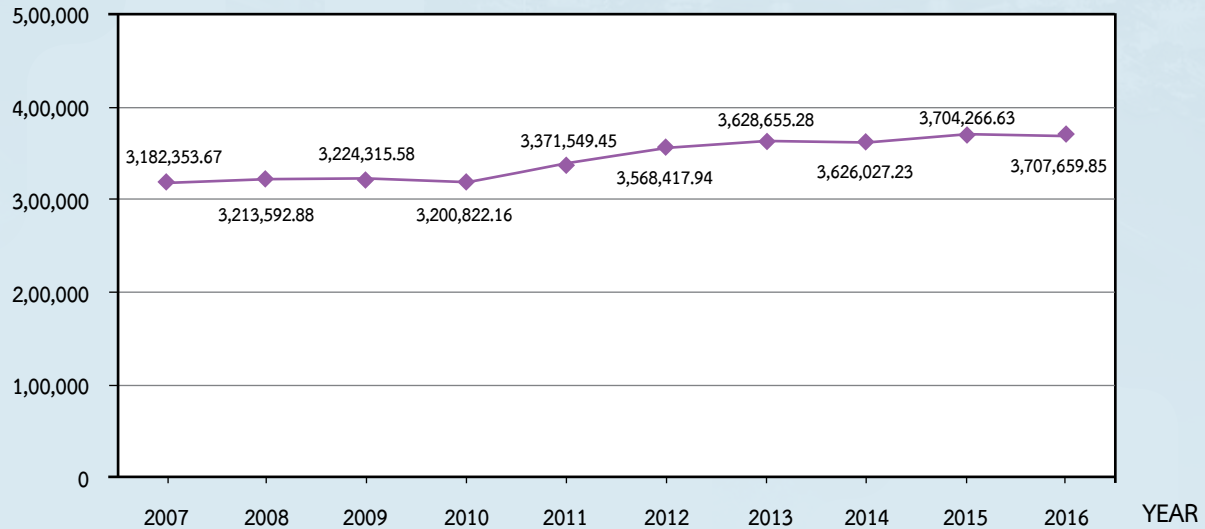
Sorted by annual amount of various districts

Source : Policy and Planning Division, Environment Department

DISTRICTS	TONS OF GARBAGE		DISTRICTS	TONS OF GARBAGE	
	TOTAL	PER DAY		TOTAL	PER DAY
Chatuchak	142,645.00	389.74	Sathon	65,883.17	180.01
Khlong Toei	119,642.90	326.89	Khlong Sam Wa	64,031.04	174.95
Bang Kapi	117,706.24	321.60	Dusit	63,750.08	174.18
Bang Khun Thian	111,452.97	304.52	Nong Khaem	61,380.55	167.71
Pathum Wan	106,544.60	291.11	Phaya Thai	60,367.09	164.94
Vadhana	106,449.78	290.85	Bang Sue	59,440.61	162.41
Bang Khen	102,066.16	278.87	Lak Si	59,191.80	161.73
Prawet	99,983.14	273.18	Phasi Charoen	58,670.93	160.3
Din Daeng	99,687.02	272.37	Bang Rak	58,286.80	159.25
Bang Khae	99,456.66	271.74	Thon Buri	57,750.21	157.79
Lat Krabang	95,759.88	261.64	Bang Phlat	55,060.87	150.44
Suan Luang	85,651.11	234.02	Phra Khanong	53,592.83	146.43
Wang Thonglang	81,991.61	224.02	Khan Na Yao	51,929.33	141.88
Bang Na	77,500.33	211.75	Bang Kho Laem	50,212.71	137.19
Bang Bon	75,538.08	206.39	Taling Chan	48,360.44	132.13
Sai Mai	75,337.47	205.84	Thung Khru	47,280.39	129.18
Ratchathewi	74,148.35	202.59	Khlong San	46,209.77	126.26
Huai Khwang	71,851.82	196.32	Saphan Sung	44,819.52	122.46
Chom Thong	71,808.84	196.20	Nong Chok	43,545.74	118.98
Bangkok Noi	70,786.25	193.41	Rat Burana	41,835.00	114.3
Phra Nakhon	70,243.12	191.92	Thawi Watthana	35,862.06	97.98
Bueng Kum	69,854.74	190.86	Pom Prap Sattru Phai	30,383.52	83.02
Min Buri	69,050.94	188.66	Bangkok Yai	29,004.66	79.25
Don Mueang	69,020.98	188.58	Samphanthawong	20,401.97	55.74
Lat Phrao	68,937.14	188.35	Others	199,522.73	545.14
Yan Nawa	67,770.90	185.17	TOTAL	3,707,659.85	10,130.24

GARBAGE COLLECTION : 2007 - 2016

NUMBER (Tons)



Source : Policy and Planning Division, Environment Department

Responsible Agency

Research and Evaluation Section

Administrative Strategy Division

Strategy and Evaluation Department

Bangkok Metropolitan Administration

173 Dinsor Road, Phra Nakhon, Bangkok 10200

Tel. 0 2225 7947 Fax. 0 0 2225 7947

<http://office.bangkok.go.th/pipd/>



Strategy and Evaluation Department Bangkok Metropolitan Administration

173 Dinsor Road, Phra Nakhon, Bangkok 10200 Tel. 0 2225 7947 Fax. 0 2225 7947 <http://office.bangkok.go.th/pipd/>